

An Entity Under GPCL Group

SUSTAINABILITY REPORT

FY 2024-25



**PRECISION IN PROCESS,
RESPONSIBILITY IN PRACTICE**

Driving Sustainability through
Commitment, Craftsmanship, and
Conscious Growth

REPORTING PERIOD

1 April 2024 – 31 March 2025

First Published Sustainability Report
Prepared with guidance by GreenMinds India

CONTENTS

5-6

ABOUT THE REPORT

- 5 Approach to Reporting
- 5 Reporting Frameworks
- 5 Reporting Boundary
- 6 Feedback

7

MESSAGE FROM THE DIRECTOR

8-23

ORGANISATIONAL PROFILE

24-28

SUSTAINABILITY STRATEGY & ESG APPROACH

- 26 ESG Framework
- 26 Stakeholder Engagement (GRI 2-29)
- 27 Materiality Assessment (GRI 3-1, 3-2)
- 28 Green Future Initiative

29-41

ENVIRONMENTAL PERFORMANCE

- 30 Energy Management (GRI 302-1, 302-4)
- 37 Water Management (GRI 303-1, 303-3)
- 38 Biodiversity & Land Stewardship (GRI 304-3)
- 39 Air Quality & Emissions Management (GRI 305, 307)
- 40 Waste Management (GRI 306-1, 306-2, 306-3, 306-4, 306-5)

42-49

SOCIAL PERFORMANCE

- 43 Occupational Health & Safety (GRI 403)
- 45 Employment Practices (GRI 401)
- 46 Diversity, Equity & Inclusion (GRI 405)
- 47 Training & Development (GRI 404)
- 48 Human Rights (GRI 408, 409, 410)
- 49 Community Engagement & Social Investment (GRI 413)

50-52

RESPONSIBLE SUPPLY CHAIN MANAGEMENT

53-58

GOVERNANCE, ETHICS & COMPLIANCE

- 54 Corporate Governance Structure (GRI 2-9 to 2-21)
- 56 Business Ethics & Anti-Corruption (GRI 205)
- 56 Data Privacy & Cybersecurity
- 57 ESG Risk Management
- 58 Whistleblower & Grievance Mechanisms (GRI 2-26)

59-60

CONSOLIDATED SUSTAINABILITY PERFORMANCE DATA

61-63

UN SUSTAINABLE DEVELOPMENT GOALS ALIGNMENT

64-68

GRI CONTENT INDEX

69-72

THIRD-PARTY ASSESSMENT STATEMENT

ABOUT THE REPORT

GRI Disclosure: GRI 1: Foundation 2021 | GRI 2-1, 2-2, 2-3

This Sustainability Report of Gujarat Tech Cast Pvt. Ltd. (GTCL) covers the financial year from 1 April 2024 to 31 March 2025. This is GTCL's first published Sustainability Report, prepared in accordance with the Global Reporting Initiative (GRI) Standards and aligned with the United Nations Sustainable Development Goals (UN SDGs) most relevant to the company's operations.

The report has been developed following GRI's core reporting principles of accuracy, balance, clarity, comparability, completeness, sustainability context, and timeliness. It reflects the company's commitment to transparency, accountability, and continuous improvement in sustainability performance.

Reporting Frameworks

This report is aligned with the GRI Standards framework to ensure standardised and transparent disclosure of environmental, social, and governance (ESG) performance. GTCL also draws inspiration from the UN SDGs to support positive environmental and social impact through its operations.

Reporting Boundary (GRI 2-2)

This report presents the sustainability strategy and performance of Gujarat Tech Cast Pvt. Ltd. (GTCL). The scope of reporting is limited to the company's single manufacturing facility located at:

SURVEY NO. 55/3, NEAR FALCON PIPES, NH-27 PIPALIYA, SADAK, TALUKA :, GONDAL, PIPALIYA, GUJARAT 360311

Unless otherwise specified, all disclosures, data, and performance indicators pertain solely to the operations of GTCL and do not include activities of external partners or affiliated entities.

External Support & Assurance (GRI 2-5)

No external assurance was undertaken for this report. However, professional third-party sustainability consultancy GreenMinds India provided support in guidance, data analysis, calculations, drafting, assessment, and preparation in accordance with best sustainability reporting practices.

Feedback

GTCL values feedback and comments on this report. Stakeholders are encouraged to share suggestions or queries through:
Email: spatel@gpclgroup.com



Global Reporting Initiative (GRI)
Universal Standards



United Nations(UN) Sustainable
Development Goals (UN SDGs)

1 NO
POVERTY



2 ZERO
HUNGER



3 GOOD HEALTH
AND WELL-BEING



4 QUALITY
EDUCATION



5 GENDER
EQUALITY



6 CLEAN WATER
AND SANITATION



7 AFFORDABLE AND
CLEAN ENERGY



8 DECENT WORK AND
ECONOMIC GROWTH



9 INDUSTRY, INNOVATION
AND INFRASTRUCTURE



10 REDUCED
INEQUALITIES



11 SUSTAINABLE CITIES
AND COMMUNITIES



12 RESPONSIBLE
CONSUMPTION
AND PRODUCTION



13 CLIMATE
ACTION



14 LIFE
BELOW WATER



15 LIFE
ON LAND



16 PEACE, JUSTICE
AND STRONG
INSTITUTIONS



17 PARTNERSHIPS
FOR THE GOALS



MESSAGE FROM THE DIRECTOR

Dear Stakeholders

At Gujarat Tech Cast Pvt. Ltd. (GTCL), we believe that true excellence in manufacturing extends beyond the precision and reliability of our steel castings. It also reflects the responsibility we carry toward our environment, our people, and the communities in which we operate.

As we present our inaugural Sustainability Report for FY 2024–25, I am proud to share our journey toward integrating Environmental, Social, and Governance (ESG) principles into the core of our operations. This report represents an important milestone for GTCL as we strengthen our commitment to transparency, accountability, and sustainable growth. Prepared in alignment with the GRI framework, it outlines our approach to responsible manufacturing and highlights initiatives aimed at reducing our environmental footprint while creating value for all stakeholders.

Aligned with India's sustainability ambitions and global frameworks such as the United Nations Sustainable Development Goals, GTCL is steadily embedding sustainable practices into its operations. Our initiatives include improving energy efficiency, implementing water conservation measures such as rainwater harvesting, strengthening workplace safety systems, and promoting employee well-being.

While this report highlights the progress we have made, it also reflects our recognition that sustainability is a continuous journey. Moving forward, we aim to establish clearer sustainability goals, enhance ESG data transparency, and deepen our engagement with stakeholders including employees, customers, suppliers, and local communities.

At GTCL, sustainability is not simply an initiative — it is an integral part of how we operate and grow as an organisation. By combining engineering excellence, innovation, and responsible practices, we aim to create long-term value while contributing to a more sustainable future. On behalf of the entire GTCL team, I extend my sincere gratitude to our stakeholders for their continued trust and support.

Together, we will continue to build a future where quality manufacturing, innovation, and responsibility go hand in hand, creating sustainable value for generations to come.



Sincerely,
Sohil Patel
Managing Director

GPCL GROUP

“ FROM MOLTEN METAL TO MEANINGFUL IMPACT
— WE CAST STRENGTH WITH RESPONSIBILITY. ”



- Core Features
- Vision Mission
- Why GPCL Group
- Gujarat Tech Cast pvt.ltd
- Infrastructure

- Strength & Capabilities
- Machine Shop
- Quality Assurance
- Certification & Approvals
- Global Footprint



GPCL Group has firmly engraved its foot in casting industry, and today, with its untiring endeavor it is one of the renowned name in not only national but International market.

Presently, GPCL Group consists of **SAND CASTING UNIT, INVESTMENT CASTING UNIT AND MACHINE SHOP UNIT.**

The group is well-organized foundry and engaged in manufacturing quality steel castings of **all major steel grades including,**

CS, SS, DUPLEX, SUPER DUPLEX, HEAT RESISTANT, NI ALLOYS, NI – CR BASED ALLOY ETC

with fully machined ready to use components.

The group is **specialized in manufacturing high quality product, on-time delivery, customer support & excellence in manufacturing critical components** for all major sectors.

From **development to on-time delivery with 360° COVERAGE** of their prospectus, **GPCL group provides complete solution** to its valued customers. The full-fledged manufacturing facility and experienced work force ensures customer satisfaction at its best by **assistance and giving valuable suggestions wherever required.**

GPCL group treats its customers as their partners crossing the boundaries of uncertainties to give them best industry experience.

“ **DELIVERING PRECISION & QUALITY IN EVERY CAST, TRUSTED GLOBALLY SINCE 1994** ”



**GPCL
GROUP**

CORE FEATURES



PREMIUM QUALITY

Our offered Valves & Pumps are precisely made by our skilled professionals using premium quality raw materials and advanced technologies.



MECHANICAL STRENGTH

Our precise Valves & Pumps offer superior mechanical strength, perfect balance, better performance, smoother surfaces, and longer life.



HIGHLY APPRECIATED

Our offered range of Valves & Pumps is highly appreciated by clients due to its attributes like high working efficiency, long service life, and high finishing surface.



IMMENSE RECOGNITION

We have gained immense recognition in the Valves & Pumps industry for manufacturing and exporting Valves & Pumps.



CUSTOM CONFIGURATIONS

We manufacture Valves & Pumps in custom configurations to meet the exact requirements of your specifications and produce exceptional quality products.



PRECISION DESIGN

Valves & Pumps offered by us ensure flawless supply and reduce noise and vibration because of their high efficiency and precision.

VISION & MISSION

We will keep **innovating new technology** and **welcome new ideas** adhered to continuous improvement in our manufacturing process ensuring that **customer requirements are fulfilled upto their satisfaction.**

To that end, we must continuously achieve superior financial and operating results while adhering to **the highest standards of business conduct.**

AT GPCL, OUR TEAM IS
**COMMITTED TO SUPPLY
QUALITY CASTINGS MEETING
INTERNATIONAL STANDARDS
TO OUR CUSTOMERS .**



WHY GPCL GROUP

OUR ACHIEVEMENTS CAN BE ATTRIBUTED TO EMPHASIS ON PROCESS AND TECHNOLOGY SUPPORTED BY A TEAM OF EXPERIENCED, KNOWLEDGEABLE STAFF AND PROFESSIONAL MANAGEMENT.

We are committed to provide value, consistent quality and outstanding services to our valued customers by implementing a strategy of advanced engineering and automation. This practice leads in reduction of lead time and increase efficiency while maintaining a healthy and safe work environment.

Established in 1994

GPCL Group has become a renowned name in both national & international casting markets.

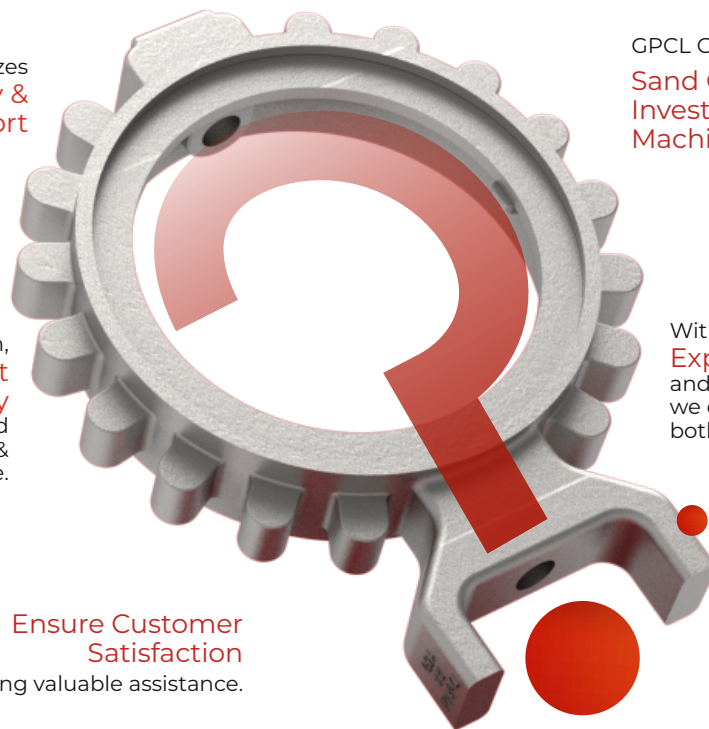
GPCL Group Emphasizes On-time Delivery & Customer Support

GPCL Group has 3 Main Units
Sand Casting
Investment Casting
Machine Shop

Providing a complete solution, From Development to Delivery with their well-equipped manufacturing facility & experienced workforce.

With 85% of Our Products Exported Globally and 15% serving the domestic market, we ensure quality and precision for both international and local clients.

Ensure Customer Satisfaction by offering valuable assistance.



GUJARAT
TECH CAST
PVT. LTD.

INVESTMENT CASTING UNIT

Gujarat Tech Cast Pvt Ltd has firmly anchored its grip on the casting industry with its well-organized and structured manufacturing of steel casting products.



With the **experience of 25 years in field of Investment castings**, we are the casting supplier of choice due to our stringent investment casting process and our world class foundries which allow us to cast stainless steel to razor sharp tolerances.

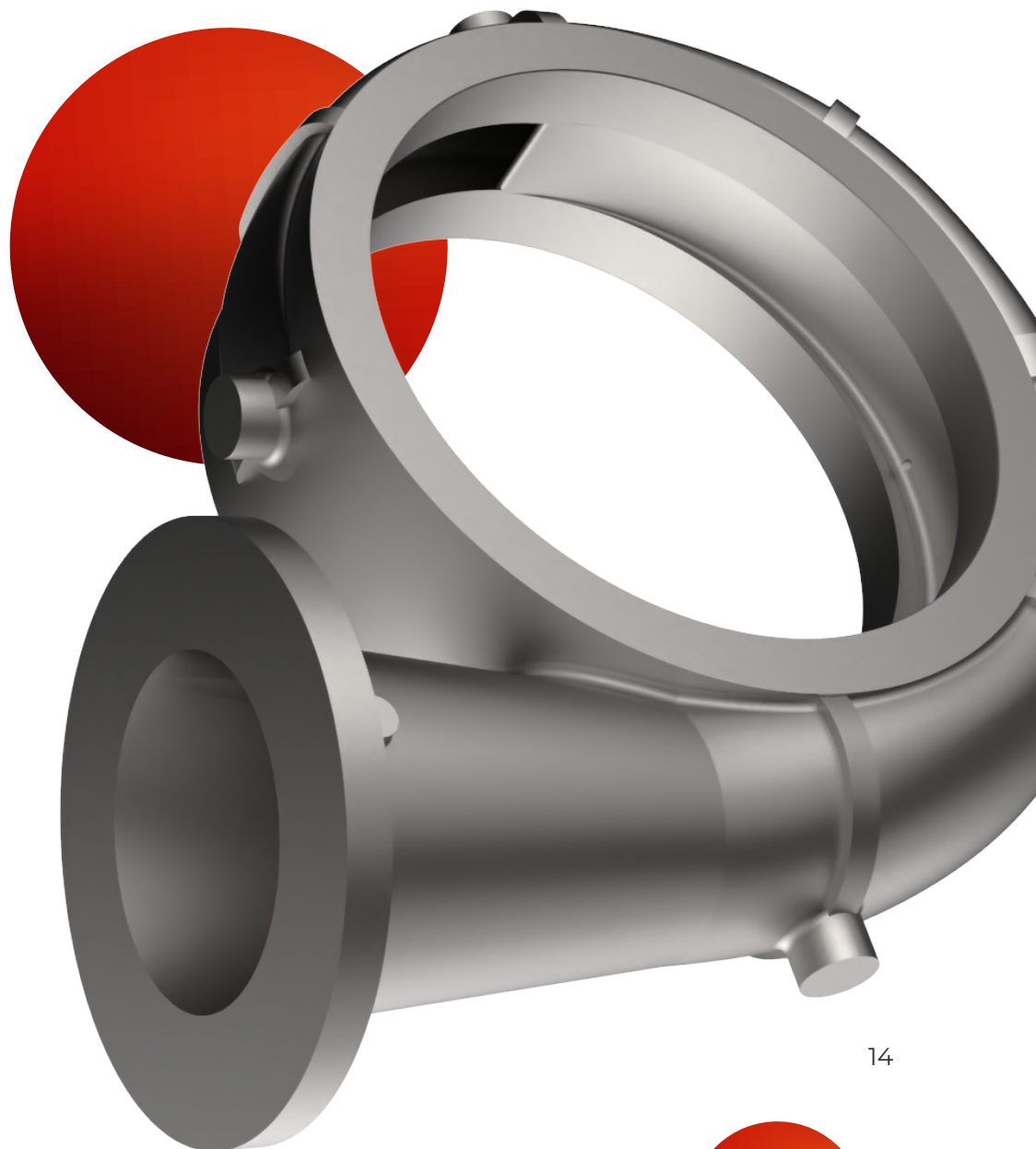


INFRASTRUCTURE

INVESTMENT CASTING UNIT

We have a state-of-the-art infrastructure facility, sprawled over a wide area at **Pipaliya (Sadak), Rajkot, Gujarat**, Which is developed to offer a premium quality range to our clients. Furthermore, our infrastructure is divided into different sections

Spread Across
15●●● SQ Meter



DIE MAKING

PRECISION DIE MAKING FOR PERFECT CASTING PATTERNS

Combining expertise and advanced tools, our die-making process ensures accurate, durable dies for superior casting outcomes.



WAX INJECTION

PRECISION WAX INJECTION FOR HIGH-QUALITY CASTING PATTERNS

Our wax injection systems produce intricate and accurate patterns, laying the foundation for superior casting results.



WAX ASSEMBLY

EFFICIENT WAX ASSEMBLY FOR COMPLEX CASTING STRUCTURES

Our specialized wax assembly process ensures stability and precision in creating intricate designs for flawless castings.



SHELL MANUFACTURING

ADVANCED SHELL MANUFACTURING FOR STRONG AND RELIABLE CASTING MOULDS

Using high-quality materials and automated processes, our shell manufacturing section delivers durable moulds for high-performance castings.



DE-WAXING

STATE-OF-THE-ART DE-WAXING FOR FLAWLESS SHELL PREPARATION

Our de-waxing systems ensure clean, defect-free shells, setting the stage for precision casting with minimal imperfections.



MELTING & POURING

EFFICIENT MELTING & POURING FOR CONSISTENT AND DURABLE CASTINGS

Our controlled melting and pouring processes ensure uniform flow and accurate alloy compositions, producing exceptional castings.

KNOCK OUT

EFFICIENT KNOCK OUT FOR SEAMLESS CASTING REMOVAL

Our knock-out process expertly removes molds, ensuring castings are extracted cleanly, preserving precision & quality.

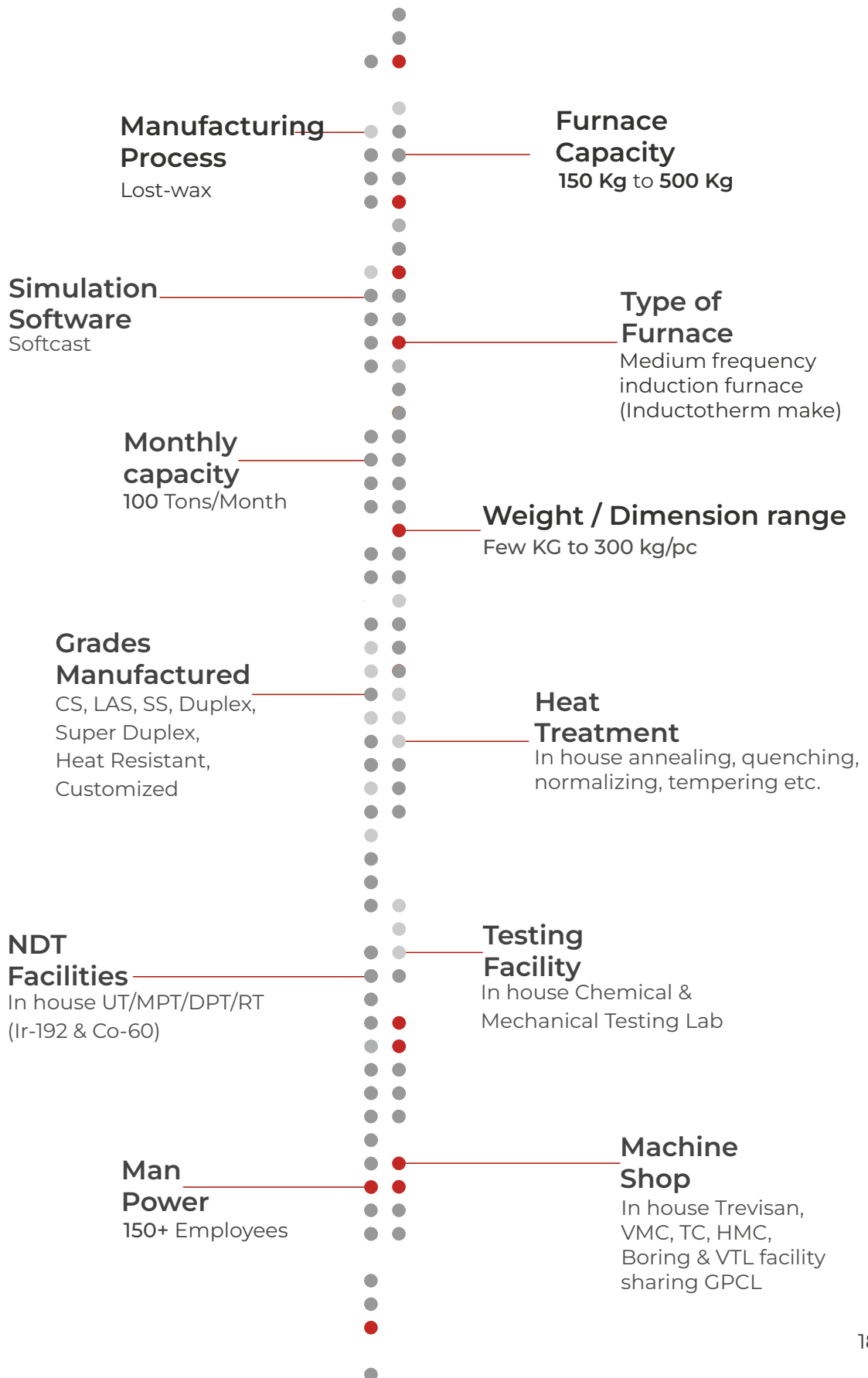


FETTLING

ADVANCED FETTLING FOR FLAWLESS CASTING FINISHES

Equipped with precision tools, our fettling section removes imperfections and delivers castings with impeccable surface quality.

STRENGTHS & CAPABILITIES SAND CASTING UNIT



MACHINE SHOP

COMPREHENSIVE MACHINE SHOP FOR FULLY FINISHED CASTINGS

Our advanced machining facilities ensure precise finishing, delivering castings ready for immediate application.



MULTI AXIS

TREVISAN DS600-200c

MACHINE SHOP



VMC

HAAS/VF6 - 2 Nos | HAAS/VF9
HAAS/VF3 YT | HAAS/VF2
With rotary Table



HMC

HAAS/EC1600 | HAAS/EC1600ZT



CNC

HAAS/ST45 - 2 Nos.



Turn-Mill

HYUNDAI SE2200LMC



CNC VTL

YU SHINE
VL1000 ATC - 2 Nos

QUALITY ASSURANCE

Feedback

We are certified for our Casting's quality, material & system by reputed audit authorities including TUV, ABS, DNV, BVQ, Lloyds, Class NK and IBR. We are also certified for PED to deliver high pressure rating castings. We have excellent in-house testing facility including simulation software, ultrasonic testing, magnetic particle testing, dye penetrant testing and radiographic testing by gamma rays with Ir-192 & Co-60 isotopes.

Our chemical and mechanical lab has calibrated instruments and machines for checking chemical and mechanical properties of castings. We practice sand testing before accepting fresh lot from suppliers. For dimension control, we ensure that all specified and unspecified dimensions remains under control hence, we always use calibrated calipers, gauges etc. and other required instruments. We also supply ready-to-use casting, conforming close dimensions, machined on CNC & conventional machines as per the requirement of customer. This makes us one-stop shop and complete solution provider.

IMPACT
TESTING

CHEMICAL
TESTING

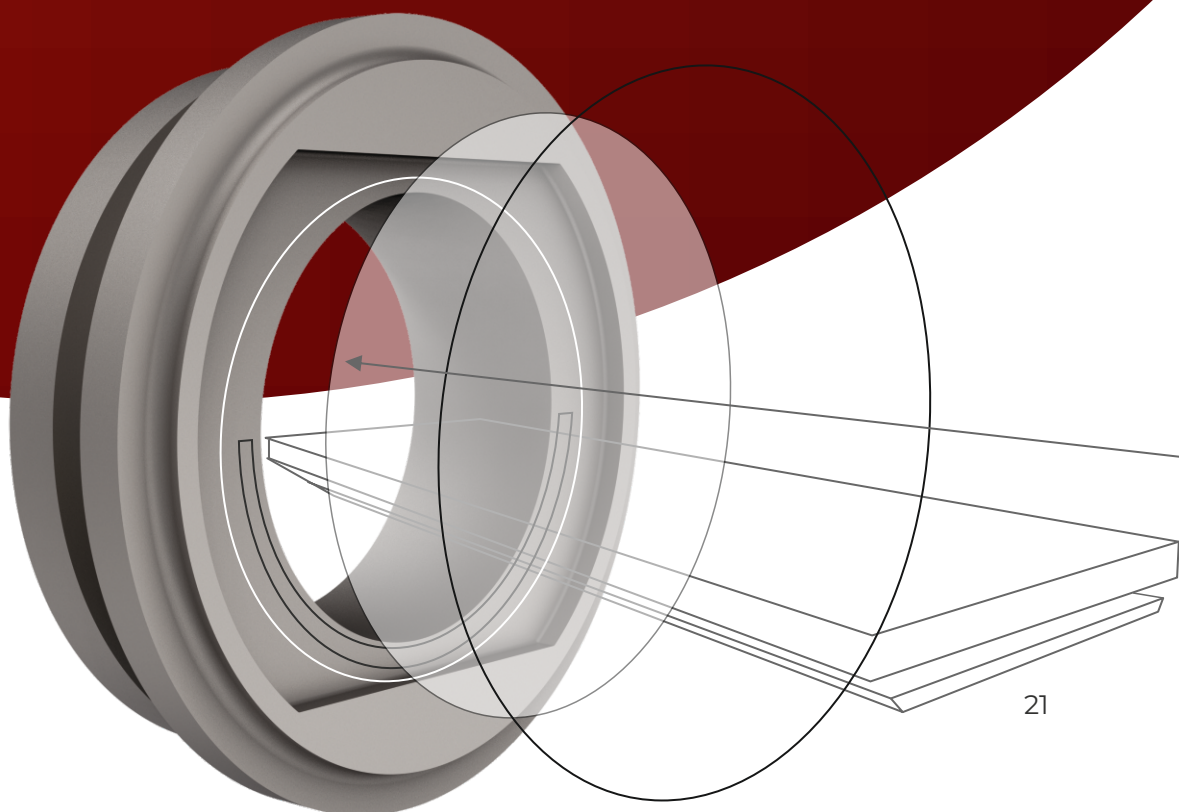
MECHANICAL
TESTING

HARDNESS
TESTING

CORROSION
TESTING

SAND
TESTING

MICROSTRUCTURE
EXAMINATION



CERTIFICATION & APPROVALS

GPCL Group is professionally managed company following quality management systems strictly. Here is the list of certification & approvals.



GLOBAL FOOT PRINT

GPCL Group's reach extends globally, serving a diverse clientele across countries. With a robust network of customers, we deliver exceptional products worldwide, ensuring our quality solutions meet the needs of clients everywhere.



“ A GLOBAL PRESENCE BUILT ON LOCAL VALUES — SHAPING INDUSTRIES WORLDWIDE WITH PRECISION, RELIABILITY, AND RESPONSIBILITY. ”

SUSTAINABILITY STRATEGY & ESG APPROACH

“ SHAPING A FUTURE WHERE INDUSTRY AND RESPONSIBILITY COEXIST.
GUIDED BY STRATEGY, DRIVEN BY IMPACT. ”



- ESG Framework
- Stakeholder Engagement (GRI 2-29)
- Materiality Assessment (GRI 3-1, 3-2)
- Green Future Initiative



GRI DISCLOSURE

GRI 2-22, 2-23, 2-24, 3-1, 3-2, 3-3

Sustainability at GTCL is guided by the belief that long-term industrial success must go hand in hand with environmental responsibility, social progress, and ethical governance. The company's sustainability framework integrates Environmental, Social, and Governance (ESG) principles into operational processes, management systems, and strategic decision-making.

ESG FRAMEWORK

GTCL's ESG approach is structured around three core pillars that directly correspond to its material topics and GRI disclosures:

ESG Pillar	Focus Areas
Environmental	Energy efficiency, water conservation, waste management, air quality, biodiversity, and land stewardship
Social	Occupational health & safety, employee welfare, diversity & inclusion, training & development, human rights, and community engagement
Governance	Corporate governance, ethics & anti-corruption, data privacy, ESG risk management, and whistleblower mechanisms

STAKEHOLDER ENGAGEMENT (GRI 2-29)

GTCL actively engages with a diverse group of stakeholders to identify priority sustainability topics and improve transparency in decision-making:

Stakeholder Group	Engagement Method	Key Topics
Employees	Training programmes, feedback mechanisms, welfare reviews	Health & safety, career development, welfare
Customers	Technical discussions, product quality reviews	Product quality, compliance, reliability
Suppliers	Vendor audits, procurement interactions	Quality, environmental compliance, ethics
Local Communities	Employment provision, environmental initiatives	Employment, environment, social investment
Regulators	Compliance reporting, inspections (GPCB)	Environmental and labour compliance
Industry Associations	Industry collaborations and knowledge sharing	Best practices, standards, innovation

MATERIALITY ASSESSMENT

(GRI 3-1, 3-2)

GTCL conducts a materiality assessment to identify sustainability issues that have the most significant impact on both the company and its stakeholders. Based on internal assessments and stakeholder considerations, the following sustainability topics have been identified as material:

Material Topic	Category	Relevant GRI Standard
Energy Consumption & Efficiency	Environmental	GRI 302
Water Management	Environmental	GRI 303
Waste Management & Recycling	Environmental	GRI 306
Air Emissions & Compliance	Environmental	GRI 305, 307
Biodiversity & Land Stewardship	Environmental	GRI 304
Occupational Health & Safety	Social	GRI 403
Employee Welfare & Engagement	Social	GRI 401
Workforce Diversity & Inclusion	Social	GRI 405
Training & Development	Social	GRI 404
Human Rights	Social	GRI 408, 409
Community Engagement	Social	GRI 413
Ethical Business Conduct	Governance	GRI 205
Corporate Governance	Governance	GRI 2-9 to 2-21
Responsible Supply Chain	Governance	GRI 308, 414
Regulatory Compliance	Governance	GRI 307



GREEN FUTURE INITIATIVE

GTCL's Green Future Initiative represents the company's long-term commitment to reducing environmental impact while strengthening sustainable manufacturing practices across five key focus areas:

Focus Area	Current Actions	Future Goals
Energy Efficiency	LED lighting installation, energy monitoring systems, equipment optimisation	Explore renewable energy, reduce energy intensity
Water Conservation	Rainwater harvesting system (5.98 lakh litre capacity), treated water reuse for landscaping	Improve monitoring, increase rainwater utilisation, reduce freshwater dependency
Resource Circularity	Recycled steel scrap as primary raw material; metal scrap recycling	Increase recycling efficiency, reduce production waste
Greenbelt Development	118 trees planted annually in collaboration with Sadbhavna Trust	Expand plantation programme, enhance biodiversity
Sustainability Culture	Environmental awareness programmes, employee participation in green initiatives	Embed sustainability in all organisational decisions



ENVIRONMENTAL PERFORMANCE

“ PROGRESS IS MEANINGFUL ONLY WHEN
IT LEAVES THE PLANET GREENER THAN WE FOUND IT. ”



- Energy Management
- GHG Emissions
- Water Management
- Biodiversity & Land Stewardship
- Air Quality & Emissions Management
- Waste Management



ENERGY MANAGEMENT

GRI Disclosure: GRI 302-1, 302-3, 302-4

SDG Alignment: SDG 7 (Affordable and Clean Energy), SDG 13 (Climate Action)

Energy management is central to GTCL's environmental strategy. The company continuously monitors energy consumption across manufacturing operations to identify efficiency improvements and reduce the overall environmental footprint of its industrial activities.

GTCL has implemented an ISO 14001:2015 certified Environmental Management System that provides a structured framework for tracking energy consumption, identifying risks, and driving continuous improvement.

7 AFFORDABLE AND CLEAN ENERGY



13 CLIMATE ACTION



ENERGY CONSUMPTION (FY 2024–25)

Energy Source	Consumption	Unit	Application
Electricity (Grid)	1,167,906	kWh	All manufacturing and facility operations
LPG (Liquefied Petroleum Gas)	62,964	kg	Industrial heating and process operations
Diesel	300	litres	Backup power and ancillary operations

ENERGY EFFICIENCY INITIATIVES

- Installation of energy-efficient LED lighting systems across the facility
- Efficient fuel use through standardised operational procedures
- Continuous monitoring and optimisation of electricity consumption
- Ongoing review of manufacturing processes to reduce energy intensity

GHG EMISSIONS

GRI Disclosure: GRI 305-1 (Scope 1)
GRI 305-2 (Scope 2) | GRI 305-4 (Emission Intensity)

SDG Alignment: SDG 13 (Climate Action) | SDG 9 (Industry, Innovation and Infrastructure)

Gujarat Tech Cast Pvt. Ltd. (GTCL) is committed to measuring, monitoring, and reducing its greenhouse gas (GHG) emissions as part of its broader environmental management strategy. In alignment with the GRI 305: Emissions 2016 standard and the GHG Protocol Corporate Accounting and Reporting Standard, GTCL has quantified its direct (Scope 1) and energy-indirect (Scope 2) emissions for FY 2023–24 and FY 2024–25, enabling year-on-year performance tracking and informed decision-making.

Emissions data has been calculated using internationally recognised emission factors applied to operational energy consumption data. The reporting boundary is consistent with this Sustainability Report — the single manufacturing facility at Veraval (Shapar), Rajkot, Gujarat.

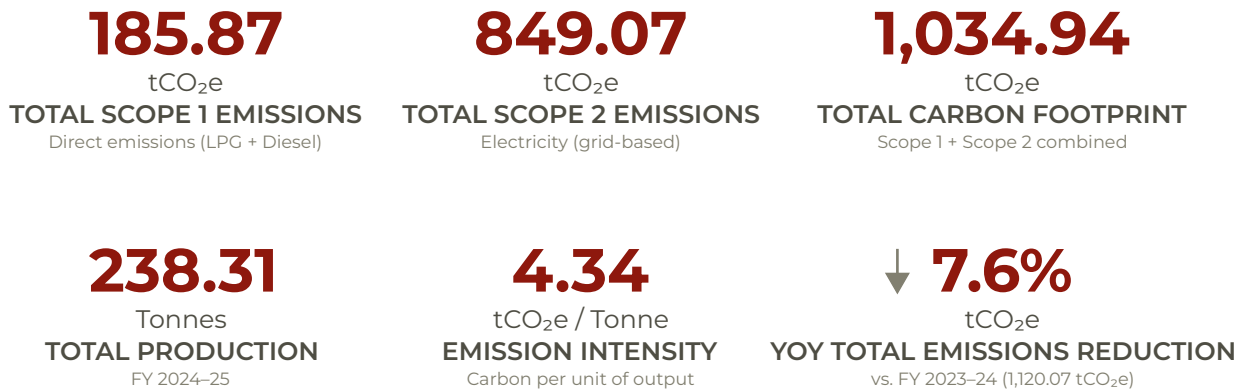
13 CLIMATE ACTION



9 INDUSTRY, INNOVATION AND INFRASTRUCTURE



EMISSIONS AT A GLANCE — FY 2024–25



Scope 1

Direct GHG Emissions (GRI 305-1)

Scope 1 emissions represent direct greenhouse gas emissions from sources owned or controlled by GTCL. These arise from the combustion of LPG used in industrial heating and process operations, and diesel consumed for backup power and ancillary activities within the facility.

Scope 1 Emissions by Source

Source	Activity	FY 2023–24 (tCO ₂ e)	FY 2024–25 (tCO ₂ e)
1.1 — Diesel Combustion	Backup power and ancillary operations	0.798	0.798
1.2 — LPG Combustion	Industrial heating and process operations	197.587	185.073
Total Scope 1		198.385	185.872

The reduction in Scope 1 emissions from FY 2023–24 to FY 2024–25 is primarily attributable to decreased LPG consumption, reflecting improved process efficiency and lower production volumes during the period. Diesel consumption remained constant at 0.798 tCO₂e, consistent with stable ancillary operations.

METHODOLOGY

Scope 1 emissions calculated using IPCC emission factors for LPG and diesel combustion. Global Warming Potential (GWP) values sourced from the IPCC Fifth Assessment Report (AR5). Emissions expressed in metric tonnes of CO₂ equivalent (tCO₂e).

Scope 2

Energy Indirect GHG Emissions (GRI 305-2)

Scope 2 emissions represent indirect greenhouse gas emissions associated with the generation of purchased electricity consumed by GTCL. All electricity is sourced from the state grid (Gujarat State). The location-based method is applied for Scope 2 calculation, using the Central Electricity Authority (CEA) emission factor for the Indian national grid.

Scope 2 Emissions — Electricity

Source	Activity	FY 2023–24 (tCO ₂ e)	FY 2024–25 (tCO ₂ e)
2 — Grid Electricity	Total Scope 2	921.681	849.067
Total Scope 2		921.681	849.067

The 7.9% reduction in Scope 2 emissions reflects decreased electricity consumption from 1,167,906 kWh (FY 2023–24) to the reporting year level, consistent with reduced production activity and ongoing energy efficiency initiatives including LED lighting installation.

METHODOLOGY

Scope 2 emissions calculated using the location-based method. Emission factor sourced from the Central Electricity Authority (CEA), India.
Method: Location-based (market-based data not currently available). No renewable energy certificates (RECs) or PPAs in place during the reporting period.

Year-on-Year GHG Performance (GRI 305-4)

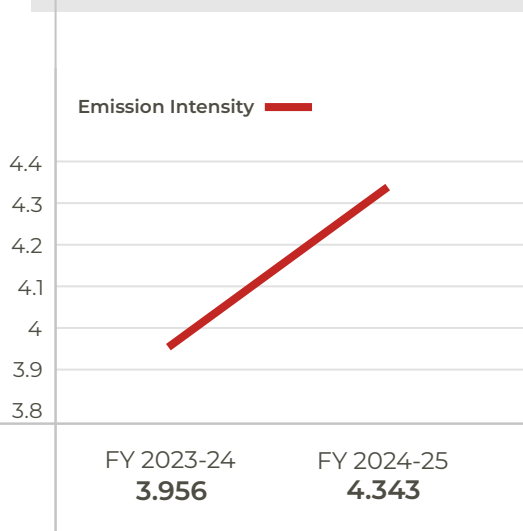
Parameter	FY 2023–24 (tCO ₂ e)	FY 2024–25 (tCO ₂ e)	YoY Change
Scope 1 — Diesel	0.798	0.798	▲ 0%
Scope 1 — LPG	197.587	185.073	▼ 6.3%
Total Scope 1	198.385	185.872	▼ 6.3%
Total Scope 2 (Electricity)	921.681	185.872	▼ 7.9%
Total Carbon Footprint (Scope 1 + 2)	1,120.066	1,034.939	▼ 7.6%

GTCL achieved a total GHG emissions reduction of 85.13 tCO₂e (7.6%) between FY 2023–24 and FY 2024–25. Both Scope 1 and Scope 2 emissions declined, demonstrating the positive impact of operational efficiencies and lower production volumes on the company's carbon footprint.

Emission Intensity (GRI 305-4)

Emission intensity is calculated as total GHG emissions (Scope 1 + Scope 2) per metric tonne of steel casting produced. This metric normalises emissions against production output, enabling meaningful comparison across periods of differing production scales.

Parameter	FY 2023–24	FY 2024–25	Unit
Total Annual Production	283.155	238.310	Metric Tonnes
Total Emissions (Scope 1 + 2)	1,120.066	1,034.939	tCO ₂ e
Emission Intensity	3.956	4.343	tCO ₂ e per Tonne of Output



The increase in emission intensity from 3.956 to 4.343 tCO₂e per tonne in FY 2024–25 is primarily attributable to a reduction in total production volume (238.31 vs. 283.16 tonnes) rather than an increase in absolute emissions — which actually declined by 85.13 tCO₂e. As production volumes recover and energy efficiency initiatives mature, GTCL targets a sustained reduction in emission intensity in future reporting periods.

GHG Reduction Initiatives (GRI 305-5)

GTCL has implemented and continues to develop initiatives aimed at reducing its GHG emissions footprint:

Initiative	Emission Scope Targeted	Status
LED lighting installation across the facility	Emission Scope Targeted	Implemented
Electricity consumption monitoring and optimisation	Scope 2 (Electricity)	Ongoing
LPG consumption optimisation through process efficiency	Scope 1 (LPG)	Ongoing
Rainwater harvesting (reduces pump energy use)	Scope 2 (Electricity)	Operational
Greenbelt / tree plantation programme (carbon sequestration)	Scope 1 offset	Annual (118 trees)
Renewable energy feasibility evaluation	Scope 2 (Electricity)	Planned — FY 2026-27
Formal GHG reduction target setting	Scope 1 + 2	Planned — FY 2025-26

GTCL does not currently generate or sell carbon credits and has no emissions trading scheme participation. The company does not report Scope 3 (value chain) emissions in this reporting cycle; a Scope 3 screening assessment is planned for FY 2025-26.

BIOGENIC EMISSIONS

GTCL does not have any significant biogenic emission sources from its manufacturing operations during the reporting period. No biomass combustion or biogenic process emissions were identified.



REPORTING APPROACH & METHODOLOGY

Parameter	Details
GHG Accounting Standard	GHG Protocol Corporate Accounting and Reporting Standard
GRI Standard Applied	GRI 305: Emissions 2016
Consolidation Approach	Operational control
Scope 1 Calculation Method	Fuel combustion — IPCC emission factors (AR5 GWP values)
Scope 2 Calculation Method	Location-based — CEA India national grid emission factor
Scope 3 Coverage	Not reported in this cycle; planned for FY 2025–26
Gases Included	CO ₂ , CH ₄ , N ₂ O (expressed as CO ₂ equivalent, tCO ₂ e)
Base Year	FY 2023–24 (first year of measurement; base year to be confirmed)
External Assurance	No external assurance for emissions data in this cycle
Prepared with support of	GreenMinds India (third-party sustainability consultancy)

WATER MANAGEMENT

GRI Disclosure: GRI 303-1, 303-3, 303-4

SDG Alignment: SDG 6 (Clean Water and Sanitation)

6 CLEAN WATER AND SANITATION



Water stewardship is an important component of GTCL's environmental management. The manufacturing operations at GTCL involve controlled water use primarily for cooling, dust suppression, sanitation, and landscaping activities.

Water Indicator

FY 2024–25

Primary Water Source	Municipal / public water supply
Rainwater Harvesting System Capacity	Approximately 5.98 lakh litres (~598,000 litres)
Rainwater Utilisation	Groundwater recharge and irrigation of plantation areas
Treated Wastewater Reuse	Landscaping and greenbelt irrigation
Discharge to Environment	Managed in compliance with GPCB regulations
Water-Related Violations	None

GTCL does not operate in a water-stressed region; however, the company proactively implements rainwater harvesting to reduce dependence on municipal water and support groundwater recharge. Future reporting will include quantified water withdrawal and discharge data in line with GRI 303-3 and GRI 303-4.

- Rainwater harvesting and reuse systems operational
- Treated wastewater directed to landscaping — no discharge to drainage without treatment
- Drainage systems maintained to prevent soil and water contamination



Rainwater Harvest
Water Reuse



BIODIVERSITY & LAND STEWARDSHIP

GRI Disclosure: GRI 304-3

SDG Alignment: SDG 15 (Life on Land)

15 LIFE ON LAND



GTCL recognises the importance of maintaining ecological balance in and around its manufacturing facility. The company is committed to responsible land use and supports greenbelt development to enhance biodiversity, improve air quality, and contribute to carbon sequestration

Biodiversity Indicator FY 2024–25

Trees Planted (FY 2023–24)	64
Trees Planted (FY 2024–25)	118
Planting Partner	Sadbhavna Trust
Plantation Purpose	Greenbelt development, biodiversity, carbon sequestration, community engagement
Sensitive Ecosystem Proximity	No protected areas or high-biodiversity zones adjacent to facility
Soil Contamination Events	None

Annual tree plantation activities are carried out in collaboration with Sadbhavna Trust. The plantation programme contributes to increasing green cover, improving local air quality, enhancing soil stability, and promoting environmental awareness within the community and the workforce.



GUJARAT TECH CAST
PVT. LTD.



AIR QUALITY & EMISSIONS MANAGEMENT

GRI Disclosure: GRI 305-1, 305-2, 305-7, 307-1

SDG Alignment: SDG 13 (Climate Action)

13 CLIMATE ACTION



Air quality management is an important aspect of GTCL's environmental responsibility. Air emissions from manufacturing operations are primarily associated with fuel combustion (LPG and diesel) and electricity use. The company monitors emissions and implements energy efficiency measures to reduce the air quality impact of industrial operations.

EMISSION MANAGEMENT PRACTICES

- Emissions monitoring aligned with Gujarat Pollution Control Board (GPCB) standards
- LED lighting adoption reduces indirect (Scope 2) electricity-related emissions
- Monitoring of particulate emissions from industrial processes
- Environmental review and internal audits conducted periodically

Regulatory Compliance Performance (GRI 307-1)

Compliance Indicator

FY 2024–25

Total monetary value of significant environmental fines

₹ 0

Number of non-monetary sanctions

0

Cases brought through dispute resolution mechanisms

0

Environmental violations recorded

None

Regulatory authority

Gujarat Pollution Control Board (GPCB)

GTCL maintained full environmental regulatory compliance throughout the reporting period and received no significant penalties or sanctions. The company will integrate formal GHG quantification (Scope 1 and Scope 2) in future reporting periods.

WASTE MANAGEMENT

GRI Disclosure: GRI 306-1, 306-2, 306-3, 306-4, 306-5

SDG Alignment: SDG 12 (Responsible Consumption and Production)

As a steel casting manufacturer, GTCL generates various types of waste, including metal scrap, packaging materials, and limited quantities of hazardous waste. The company follows a structured waste management approach emphasising source segregation, recycling, and responsible disposal.



Waste Generation Profile

Waste Category	Type of Waste	Unit	FY 2024-25
Hazardous Waste	Used / spent oil	Lit	32 Lit
Non-Hazardous Waste	Knock out Surry, Melting Slag, Used Blasting shots, paper, plastic, etc.	MT	55.40 MT

Non-Hazardous Waste Streams

Waste Streams	Management Method
Steel and metal scrap (casting and machining)	Collected and recycled through authorised recycling channels
Paper and cardboard packaging	Segregated and sent to recycling vendors
Plastic packaging materials	Segregated and sent to recycling vendors
Wooden pallets (product transportation)	Reused and recycled

Hazardous Waste Streams

Waste Streams	Management Method
Used / spent oil (equipment maintenance)	Sent to authorised recyclers for recovery and reuse per GPCB regulations

Waste Performance Summary

Waste Indicator

FY 2024–25

Primary raw material type	Recycled steel scrap (supports circular economy)
Metal scrap recycling	All production scrap recycled through authorised channels
Hazardous waste disposal route	Authorised recyclers (spent oil recovery)
Hazardous waste regulatory violations	None
Waste to landfill	Minimised; recycling prioritised

GTCL's use of recycled steel scrap as its primary raw material is a significant circular economy practice that reduces dependence on virgin materials, lowers extraction-related environmental impacts, and supports the recycling industry.



ENVIRONMENTAL PERFORMANCE SUMMARY

Environmental Indicator

FY 2024–25

Electricity Consumption	1,167,906 kWh
LPG Consumption	62,964 kg
Diesel Consumption	300 litres
Rainwater Harvesting Capacity	~5.98 lakh litres (598,000 litres)
Trees Planted	118
Environmental Fines	₹ 0
Hazardous Waste Violations	None
Environmental Regulatory Violations	None

SOCIAL PERFORMANCE

“ STRONGER TOGETHER, BETTER FOR ALL.
PROGRESS SHAPED BY PURPOSE. ”



- Occupational Health & Safety (GRI 403)
- Employment Practices (GRI 401)
- Diversity, Equity & Inclusion (GRI 405)
- Training & Development (GRI 404)
- Human Rights (GRI 408, 409, 410)
- Community Engagement & Social Investment (GRI 413)

OCCUPATIONAL HEALTH & SAFETY

GRI Disclosure: GRI 403-1, 403-2, 403-3, 403-4, 403-5, 403-6, 403-9, 403-10

SDG Alignment: SDG 3 (Good Health and Well-being), SDG 8 (Decent Work and Economic Growth)

**3 GOOD HEALTH
AND WELL-BEING**



Employee health and safety is a fundamental priority at GTCL. As a steel casting manufacturer, the company operates equipment and processes that carry inherent workplace risks. GTCL is committed to preventing workplace injuries, promoting employee well-being, and ensuring compliance with occupational health and safety regulations.

OHS Management System (GRI 403-1)

GTCL has implemented an Occupational Health and Safety management system certified under ISO 45001:2018. The system covers all operational areas within the facility:

- Manufacturing and casting operations
- Machinery operation and maintenance activities
- Material handling and logistics areas
- Administrative and support functions

Hazard Identification and Risk Management (GRI 403-2)

- Routine workplace inspections and safety audits
- Identification of operational hazards (machinery, materials, processes)
- Implementation of preventive safety measures and standard operating procedures
- Continuous monitoring of workplace safety performance

Safety Training (GRI 403-5)

- Induction training for all new employees
- Safety awareness programmes for operational staff
- Training on safe operation of machinery and equipment
- Periodic safety briefings and awareness sessions



Workplace Safety Performance

(GRI 403-9, 403-10)

Safety Indicator

FY 2024–25

Total Recordable Workplace Incidents	0
Fatalities	0
Lost Time Injuries (LTI)	0
Safety Training Programmes	Conducted for all employees
OHS Management System	ISO 45001:2018 implemented
Incident Investigation Process	In place

Employee Welfare

(GRI 403-6)

- Zero-interest loans for employees
- Free meal facility for female employees
- Employee engagement activities and workplace events
- Performance recognition programmes
- Festival celebrations and cultural events

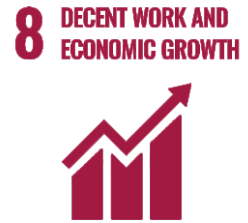


EMPLOYMENT PRACTICES

GRI Disclosure: GRI 401-1, 401-2, 401-3

SDG Alignment: SDG 8 (Decent Work and Economic Growth)

GTCL provides stable, fair, and local employment. During FY 2024–25, the total workforce comprised 49 employees, with 100% recruited from the local community. This reflects the company's commitment to regional economic development and workforce inclusivity.



Employment Indicator

FY 2024–25

Total Employees	49
Male Employees	43
Female Employees	6
Local Hiring Rate	100% of workforce locally recruited
Employment Type	Permanent employment provided
Minimum Wage Compliance	Full compliance with statutory wage requirements



DIVERSITY, EQUITY & INCLUSION

GRI Disclosure: GRI 405-1, 405-2

SDG Alignment: SDG 5 (Gender Equality), SDG 10 (Reduced Inequalities)

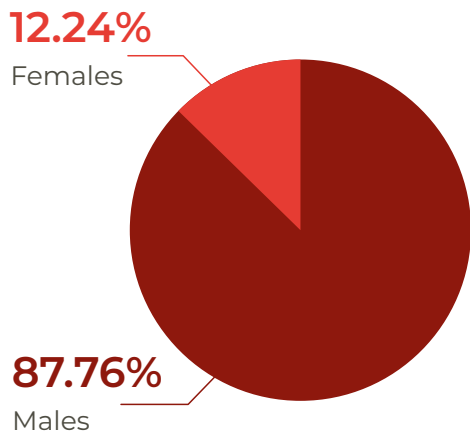
GTCL is committed to creating a workplace that respects the dignity and contributions of every individual, irrespective of gender, background, or identity. The company promotes equitable employment practices and actively works to increase female workforce participation in the manufacturing sector.



DEI Indicator

FY 2024–25

Total Workforce	49 employees
Female Employees	6 (12.24% of total workforce)
Male Employees	43 (87.76% of total workforce)
Female-Specific Welfare Measures	Free meal facility; inclusive workplace policies
Equal Pay Commitment	Pay equity maintained across gender lines
Discrimination Complaints	0



GTCL acknowledges that gender diversity in manufacturing is an ongoing journey. The company is committed to improving female workforce representation through targeted recruitment, inclusive welfare benefits, and a respectful workplace culture free from harassment or discrimination.

TRAINING & DEVELOPMENT

GRI Disclosure: GRI 404-1, 404-2, 404-3

SDG Alignment: SDG 4 (Quality Education), SDG 8 (Decent Work and Economic Growth)

Investing in workforce capability is central to GTCL's long-term operational excellence. Training programmes span safety awareness, technical skill development, operational procedures, and employee development initiatives.

4 QUALITY EDUCATION



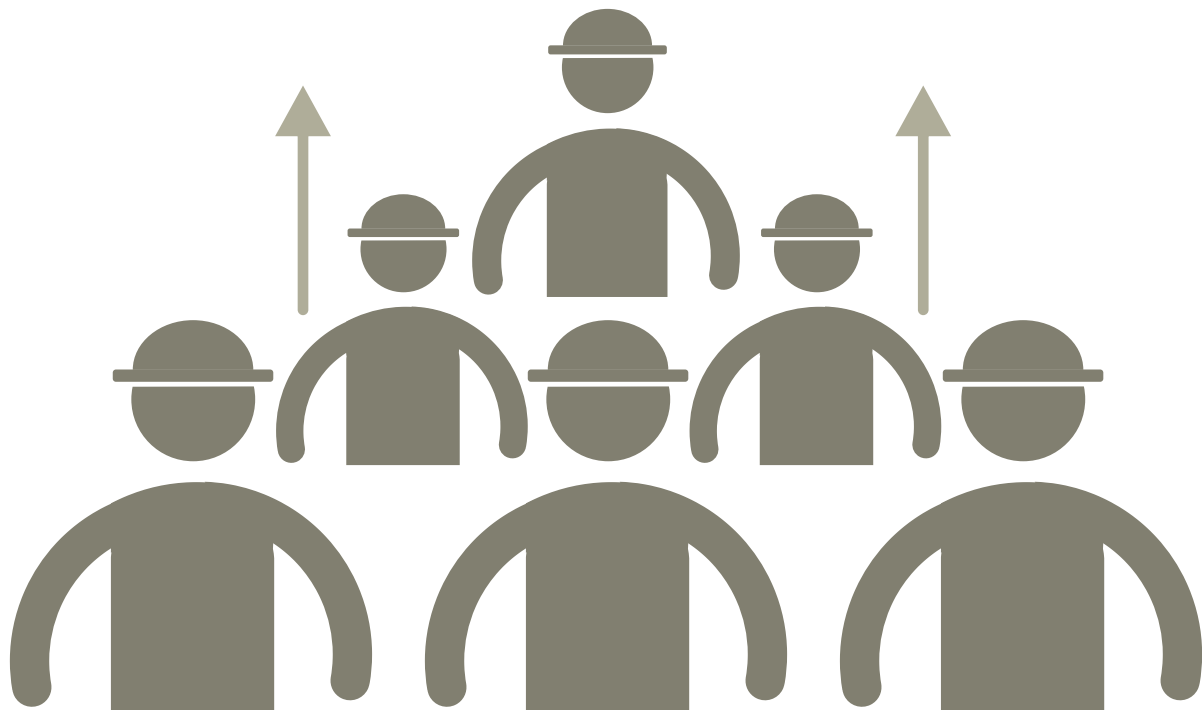
Training Indicator

FY 2024–25

Total Employees Trained	49
Training Coverage	100% of workforce
Training Topics	Safety, environmental awareness, technical operations, quality standards
Average Training Hours per Employee	Data currently being formalised for future reporting
Structured Training Documentation	Yes, Available with HR Department

- Performance recognition and award programmes
- Employee engagement activities
- Skill enhancement through on-the-job experience and mentoring

GTCL plans to strengthen its training monitoring system by implementing structured documentation of training hours and learning outcomes in future reporting cycles, in line with GRI 404-1.



HUMAN RIGHTS

GRI Disclosure: GRI 406-1, 407-1, 408-1, 409-1

SDG Alignment: SDG 8 (Decent Work and Economic Growth), SDG 16 (Peace, Justice and Strong Institutions)

Respect for human rights is an essential component of responsible business conduct at GTCL. The company is committed to conducting operations in a manner that respects the dignity, rights, and well-being of all employees, workers, and stakeholders.

8 DECENT WORK AND ECONOMIC GROWTH



Human Rights Indicator

Status / FY 2024–25

Child Labour Policy	Strictly prohibited; zero tolerance enforced
Forced or Compulsory Labour	Not permitted; all employment is voluntary
Minimum Working Age Compliance	Full compliance with applicable legal requirements
Freedom of Employment Termination	Employees may terminate employment per statutory requirements
Discrimination Incidents	Zero cases reported
Sexual Harassment Policy (POSH Act)	Policy implemented; zero cases reported
Living Wage Compliance	Statutory minimum wage requirements met

GTCL's occupational health and safety practices (ISO 45001) and employee welfare initiatives collectively reinforce the company's commitment to a respectful, safe, and harassment-free workplace.



NO CHILD LABOUR



NO FORCED LABOUR

COMMUNITY ENGAGEMENT & SOCIAL INVESTMENT

GRI Disclosure: GRI 413-1, 413-2

SDG Alignment: SDG 11 (Sustainable Cities and Communities), SDG 13 (Climate Action)

GTCL recognises that sustainable industrial growth should contribute positively to the well-being of local communities and surrounding ecosystems. The company supports environmental conservation, local employment, and community participation initiatives.

11 SUSTAINABLE CITIES AND COMMUNITIES



13 CLIMATE ACTION



Community Initiative

FY 2023–24

FY 2024–25

Trees Planted	64	118
Community Partner	Sadbhavna Trust	Sadbhavna Trust
Local Hiring Rate	100%	100%
Negative Community Impacts Reported	None	None

The tree plantation programme contributes to greenbelt development, soil stability, improved local air quality, biodiversity enhancement, and community environmental awareness. GTCL's 100% local hiring policy also directly supports regional livelihoods and economic resilience.

- Tree plantation and greenbelt development activities
- Environmental awareness and sustainability programmes
- Community engagement events and CSR activities

SOCIAL PERFORMANCE SUMMARY

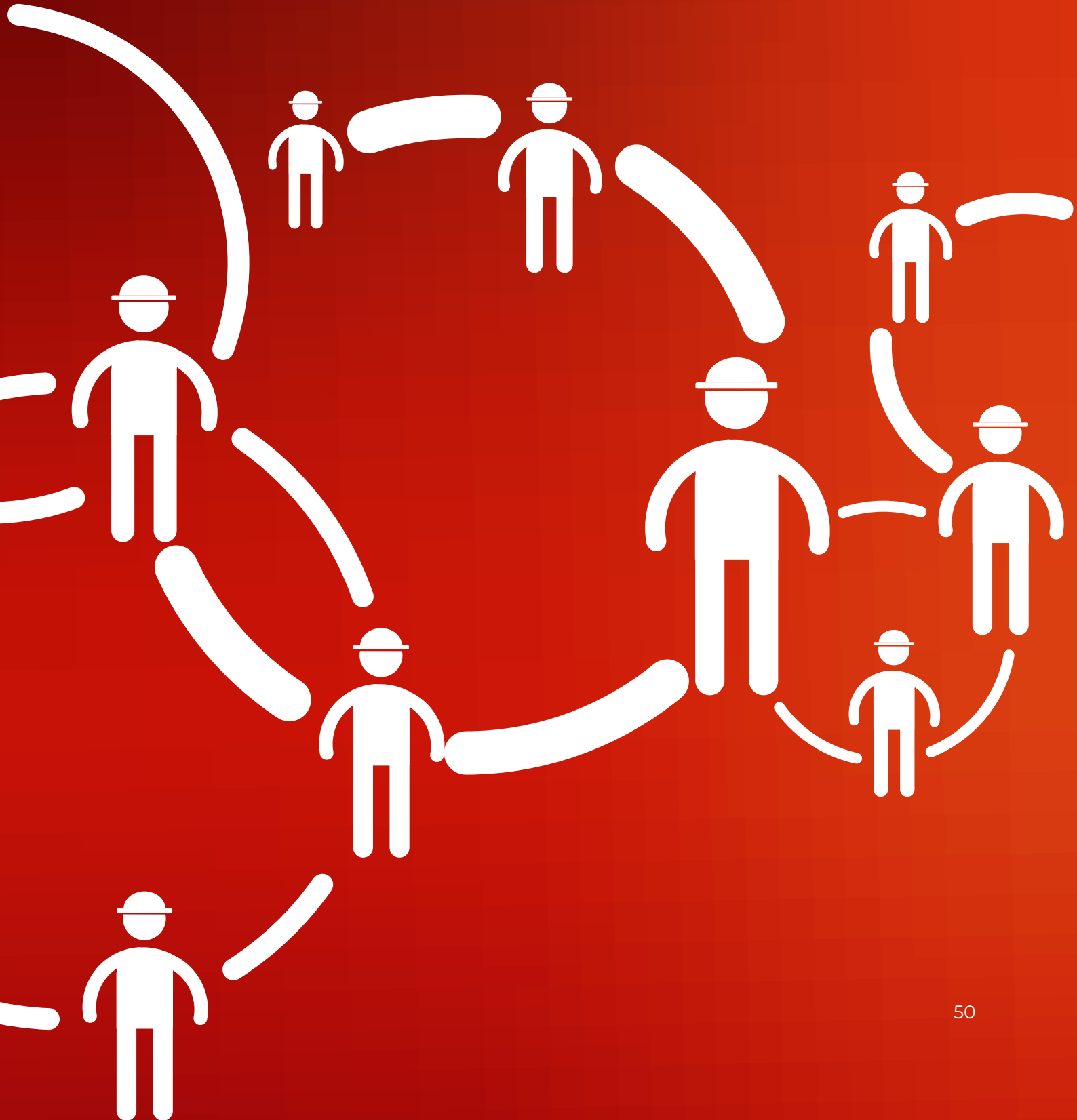
Community Initiative

FY 2023–24

Total Employees	49
Female Employees	6 (12.24%)
Local Hiring Rate	100%
Workplace Incidents	0
Fatalities	0
Employees Trained	49 (100%)
Human Rights Violations	None
Child/Forced Labour Cases	None
Discrimination Complaints	None
Trees Planted (Community)	118

RESPONSIBLE SUPPLY CHAIN MANAGEMENT

“ INTEGRITY AT EVERY LINK OF THE CHAIN ”



RESPONSIBLE SUPPLY CHAIN MANAGEMENT

GRI Disclosure: GRI 405-1, 405-2

SDG Alignment: SDG 5 (Gender Equality), SDG 10 (Reduced Inequalities)

GTCL is committed to creating a workplace that respects the dignity and contributions of every individual, irrespective of gender, background, or identity. The company promotes equitable employment practices and actively works to increase female workforce participation in the manufacturing sector.

8 DECENT WORK AND ECONOMIC GROWTH



16 PEACE, JUSTICE AND STRONG INSTITUTIONS



SUPPLY CHAIN SUSTAINABILITY OVERVIEW

Indicator

FY 2024–25

Supplier Audit Frequency	Annual supplier audits performed
Local Procurement Focus	Majority of suppliers located within regional supply network
Primary Raw Material Sourcing	Recycled steel scrap used as primary input material
Supplier ESG Evaluation	Ongoing evaluation in progress
Supplier Code of Conduct	Implemented and communicated to suppliers

SUSTAINABLE PROCUREMENT POLICY

GTCL's procurement practices are guided by principles that promote transparency, accountability, and responsible sourcing:

- Compliance with environmental and applicable labour regulations
- Responsible sourcing of raw materials with preference for recycled inputs
- Promotion of ethical and transparent business conduct throughout the supply chain
- Preference for suppliers who demonstrate sustainable operational practices
- Commitment to quality, safety, and environmental responsibility

Using recycled steel scrap as the primary raw material helps reduce the environmental impact associated with mining and processing of virgin metals, supports resource conservation, and contributes to circular economy principles.

Supplier ESG Evaluation

(GRI 308-1, 414-1)

GTCL evaluates suppliers based on product quality, regulatory compliance, environmental responsibility, and operational reliability. The company is working towards strengthening its supplier ESG assessment processes to improve transparency and sustainability performance across its supply chain.

Supplier Evaluation Criteria

FY 2024–25

Product quality and reliability	Evaluated in all supplier assessments
Regulatory and legal compliance	Monitored through annual audits
Environmental practices	Included in supplier ESG evaluation (in progress)
Labour and social practices	Covered under Supplier Code of Conduct
ESG screening process	Being formalised for future cycles

Local Procurement & Community Impact

(GRI 204-1)

GTCL encourages procurement from local suppliers wherever feasible. Supporting local vendors reduces transportation-related environmental impacts, strengthens regional supply chain resilience, and contributes to local economic development. The majority of GTCL's suppliers are located within the regional supply network.

SUPPLIER MONITORING & CORRECTIVE ACTIONS

Annual supplier audits assess key aspects including quality standards, environmental compliance, waste management practices, and workplace safety. When improvement opportunities are identified, GTCL works collaboratively with suppliers to implement corrective actions through constructive engagement and process improvements, strengthening long-term partnerships.

Looking ahead, GTCL plans to integrate more systematic ESG criteria into supplier evaluations, improve documentation of audit results, and expand sustainability awareness across the supply chain.

GOVERNANCE, ETHICS & COMPLIANCE

“ INTEGRITY IS THE FOUNDATION ON WHICH
EVERY LASTING ENTERPRISE IS BUILT. ”



- Corporate Governance Structure (GRI 2-9 to 2-21)
- Business Ethics & Anti-Corruption (GRI 205)
- Data Privacy & Cybersecurity
- ESG Risk Management
- Whistleblower & Grievance Mechanisms (GRI 2-26)

Corporate Governance Structure

GRI Disclosure: GRI 2-9, 2-10, 2-11, 2-12, 2-13, 2-16, 2-17, 2-20, 2-21

Strong corporate governance is essential to ensuring transparency, accountability, and responsible business conduct at GTCL. The company's governance framework provides clear roles and responsibilities for leadership and management while ensuring that operations align with strategic objectives and sustainability commitments.

LEADERSHIP AND MANAGEMENT OVERSIGHT

GTCL's senior leadership team guides the company's strategic direction and ensures effective governance. Senior management is responsible for overseeing operational performance, regulatory compliance, and implementation of sustainability initiatives.

ESG COMMITTEE

GTCL has established a dedicated ESG Committee responsible for overseeing sustainability initiatives and ESG-related policies. The committee includes representatives from senior leadership:

Position	Role within ESG Committee
Director	Strategic oversight of ESG programmes
President	Operational leadership and programme integration
Sustainability Manager	ESG programme implementation and monitoring

GOVERNANCE POLICIES

- Key governance policies maintained by GTCL, reviewed annually:
- ESG / Sustainability Policy
- Anti-Corruption and Ethics Policy
- Supplier Code of Conduct
- Whistleblower and Grievance Mechanism Policy
- Data Privacy Policy

GOVERNANCE PERFORMANCE INDICATORS

Governance Indicator	FY 2024–25
ESG Committee	Established
ESG Policy	Implemented
Anti-Corruption Policy	Implemented
Whistleblower Mechanism	Available
Supplier Code of Conduct	Implemented
Cases of corruption or bribery identified	0
Whistleblower complaints received	0
Confirmed cases of unethical conduct	0
Data breach incidents	0
Environmental non-compliance cases	0



BUSINESS ETHICS & ANTI-CORRUPTION

GRI Disclosure: GRI 205-1, 205-2, 205-3

SDG Alignment: SDG 16 (Peace, Justice and Strong Institutions)

GTCL is committed to creating a workplace that respects the dignity and contributions of every individual, irrespective of gender, background, or identity. The company promotes equitable employment practices and actively works to increase female workforce participation in the manufacturing sector.



Anti-Corruption Policy

(GRI 205-2)

GTCL has implemented an anti-corruption policy that establishes clear expectations regarding ethical behaviour. Key provisions include:

- Zero tolerance for bribery and corruption in any form
- Prohibition of improper payments or inducements
- Transparent procurement and vendor selection processes
- Full compliance with applicable anti-corruption laws
- Internal communication and orientation on ethics for all employees

Anti-Corruption Indicator	FY 2024–25
---------------------------	------------

Confirmed cases of corruption or bribery	0
Employees communicated to on anti-corruption policy	All employees
Business partners communicated to on anti-corruption policy	All key suppliers (via Code of Conduct)

Data Privacy & Cybersecurity

GRI Disclosure: GRI 418-1

As GTCL increasingly relies on digital systems for operational management, communication, and documentation, the company recognises the need to maintain strong data protection and cybersecurity practices. GTCL respects the privacy of employees, customers, suppliers, and business partners.



Data Privacy Indicator

FY 2024–25

Data breach incidents	0
Complaints regarding privacy violations	0
Access controls to IT systems	Implemented
Secure storage of operational and financial documents	Implemented

GTCL's information security practices include controlled system access, secure storage of documentation, IT infrastructure monitoring, and cybersecurity awareness among employees. The company plans to strengthen digital security protocols and adopt updated IT security practices in future reporting cycles.

ESG Risk Management

GRI Disclosure: GRI 2-25, 2-26, 3-3

GTCL integrates ESG risk considerations into operational planning and corporate governance. Through systematic risk identification, assessment, and monitoring, the company proactively addresses environmental, social, and governance challenges.

ESG Risk Category	Key Risks Identified	Mitigation Approach
Environmental	Energy consumption, waste generation, emissions	ISO 14001 EMS, energy monitoring, recycling practices
Social / Safety	Workplace injuries, employee well-being	ISO 45001 OHS system, safety training, welfare programmes
Regulatory / Compliance	Environmental and labour law changes	Active GPCB compliance, legal monitoring, internal reviews
Supply Chain	Supplier non-compliance, operational disruptions	Annual supplier audits, ESG evaluation, Code of Conduct
Governance / Conduct	Corruption risk, ethical breaches	Anti-corruption policy, whistleblower mechanism



Whistleblower & Grievance Mechanisms

GRI Disclosure: GRI 2-25, 2-26

GTCL supports transparency and accountability through a whistleblower mechanism that allows employees and stakeholders to report concerns related to unethical behaviour, corruption, safety incidents, or policy violations. The mechanism ensures:

- Confidential reporting channels available to all employees
- Protection of individuals who report issues in good faith
- Systematic investigation and resolution of reported concerns
- No retaliation against whistle-blowers

Whistleblower Indicator

FY 2024–25

Whistleblower complaints received	0
Grievances formally raised	0
Cases under investigation	0
Mechanism communicated to employees	Yes



CONSOLIDATED SUSTAINABILITY PERFORMANCE DATA

This section provides a consolidated view of GTCL's key sustainability performance indicators for FY 2024–25, aligned with GRI disclosure requirements.

ENVIRONMENTAL PERFORMANCE DATA

GRI Disclosure	Indicator	FY 2024–25
GRI 302-1	Electricity Consumption	1,167,906 kWh
GRI 302-1	LPG Consumption	62,964 kg
GRI 302-1	Diesel Consumption	300 litres
GRI 303-1	Water Source	Municipal supply + rainwater harvesting
GRI 303-1	Rainwater Harvesting Capacity	~598,000 litres
GRI 304-3	Trees Planted	118
GRI 305	GHG Emissions (Scope 1 & 2)	To be quantified in next reporting cycle
GRI 306-3	Hazardous Waste Violations	None
GRI 307-1	Environmental Fines	₹ 0
GRI 307-1	Environmental Regulatory Violations	None

SOCIAL PERFORMANCE DATA

GRI Disclosure	Indicator	FY 2024–25
GRI 401-1	Total Employees	49
GRI 401-1	New Hires (Local)	100% locally recruited
GRI 403-9	Recordable Workplace Incidents	0
GRI 403-9	Fatalities	0
GRI 403-5	Safety Training Programmes	Conducted for all employees
GRI 403-1	OHS Management System	ISO 45001:2018 implemented

GRI Disclosure Indicator FY 2024–25

GRI 404-1	Total Employees Trained	49 (100% trained)
GRI 405-1	Female Employees	6 (12.24%)
GRI 405-1	Male Employees	43 (87.76%)
GRI 408-1	Child Labour Incidents	None
GRI 409-1	Forced Labour Incidents	None
GRI 413-1	Community Initiatives	Tree plantation (118 trees, Sadbhavna Trust)

GOVERNANCE PERFORMANCE DATA

GRI Disclosure Indicator FY 2024–25

GRI 205-3	Corruption / Bribery Incidents	0
GRI 2-26	Whistleblower Complaints	0
GRI 418-1	Data Privacy Breaches	0
GRI 307-1	Environmental Non-Compliance Cases	0
GRI 2-9	ESG Committee	Established
GRI 2-23	Anti-Corruption Policy	Implemented
GRI 2-25	Whistleblower Mechanism	Available
GRI 204-1	Supplier Code of Conduct	Implemented
GRI 308-1	Supplier ESG Evaluation	In progress

UN SUSTAINABLE DEVELOPMENT GOALS ALIGNMENT

GTCL's sustainability initiatives contribute to the following United Nations Sustainable Development Goals:

SDG	GTCL Contribution
<p>3 GOOD HEALTH AND WELL-BEING</p> 	<p>Good Health and Well-being</p> <p>ISO 45001 OHS system; zero incidents; employee welfare programmes</p>
<p>4 QUALITY EDUCATION</p> 	<p>Quality Education</p> <p>100% employee training coverage; skill development initiatives</p>
<p>5 GENDER EQUALITY</p> 	<p>Gender Equality</p> <p>Female workforce inclusion; inclusive welfare (free meals); anti-discrimination policies</p>
<p>6 CLEAN WATER AND SANITATION</p> 	<p>Clean Water and Sanitation</p> <p>Rainwater harvesting (598,000 litre capacity); water reuse for landscaping</p>

SDG	GTCL Contribution
-----	-------------------

7 AFFORDABLE AND CLEAN ENERGY



Affordable and Clean Energy

LED lighting adoption; energy consumption monitoring; future renewable energy exploration

8 DECENT WORK AND ECONOMIC GROWTH



Decent Work and Economic Growth

100% local hiring; fair wages; zero workplace incidents; 96 decent jobs

9 INDUSTRY, INNOVATION AND INFRASTRUCTURE



Industry, Innovation and Infrastructure

ISO-certified quality and EMS; international approvals; responsible manufacturing practices

10 REDUCED INEQUALITIES



Reduced Inequalities

Gender-inclusive welfare; equal opportunity employment

11 SUSTAINABLE CITIES AND COMMUNITIES



Sustainable Cities and Communities

Local employment; community tree plantation with Sadbhavna Trust

SDG	GTCL Contribution
-----	-------------------



Responsible Consumption and Production

Recycled steel scrap as primary raw material; circular waste management; responsible procurement



Climate Action

Energy efficiency initiatives; LED adoption; greenbelt development; future GHG tracking



Life on Land

Annual tree plantation (118 trees); greenbelt development; soil protection measures



Peace, Justice and Strong Institutions

Anti-corruption policy; whistleblower mechanism; transparent governance; ESG committee

GRI CONTENT INDEX

This GRI Content Index maps each GRI disclosure to the relevant sections of this Sustainability Report. This report has been prepared in accordance with the GRI Standards for the period 1 April 2024 to 31 March 2025.

GRI 1: Foundation 2021

Disclosure	Requirement	Location / Response
GRI 1	Claim of reporting in accordance with GRI Standards	About This Report section

GRI

Disclosure	Disclosure Name	Location / Response
------------	-----------------	---------------------

GRI 2 : General Disclosures 2021

GRI 2-1	Organizational details	Organisational Profile section
GRI 2-2	Entities included in the organization's sustainability reporting	About This Report – Reporting Boundary
GRI 2-3	Reporting period, frequency and contact point	About This Report section
GRI 2-4	Restatements of information	First report; no restatements applicable
GRI 2-5	External assurance	About This Report – External Support
GRI 2-6	Activities, value chain and other business relationships	Organisational Profile; Supply Chain section
GRI 2-9	Governance structure and composition	Corporate Governance section
GRI 2-10	Nomination and selection of governance body	Corporate Governance – ESG Committee
GRI 2-17	Collective knowledge of governance body	Corporate Governance section
GRI 2-20	Process for determining remuneration	Remuneration aligned with statutory requirements; details to be expanded
GRI 2-21	Annual total compensation ratio	Data not currently disclosed; to be reported in future cycles
GRI 2-22	Statement on sustainable development strategy	Message from the Managing Director; ESG Approach

GRI Disclosure	Disclosure Name	Location / Response
-----------------------	------------------------	----------------------------

GRI 2-23	Policy commitments	ESG Strategy; Anti-Corruption; Governance sections
GRI 2-24	Embedding policy commitments	ESG Strategy; Environmental; Social; Governance sections
GRI 2-25	Processes to remediate negative impacts	Whistleblower section; ESG Risk Management
GRI 2-26	Mechanisms for seeking advice	Whistleblower & Grievance Mechanisms section
GRI 2-29	Approach to stakeholder engagement	Sustainability Strategy – Stakeholder Engagement
GRI 2-30	Collective bargaining agreements	No collective bargaining agreements in place; statutory rights respected

GRI 3: Material Topics 2021

GRI 3-1	Process to determine material topics	Sustainability Strategy – Materiality Assessment
GRI 3-2	List of material topics	Sustainability Strategy – Materiality Assessment Table
GRI 3-3	Management of material topics	All thematic sections (Environmental, Social, Governance)

Topic-Specific GRI Standards

GRI 204-1	Proportion of spending on local suppliers	Operations assessed for corruption risks
GRI 205-1	Operations assessed for corruption risks	Business Ethics & Anti-Corruption
GRI 205-2	Communication and training on anti-corruption	Business Ethics & Anti-Corruption
GRI 205-3	Confirmed incidents of corruption	Business Ethics & Anti-Corruption
GRI 302-1	Energy consumption within organisation	Environmental – Energy Management
GRI 302-4	Energy consumption within organisation	Environmental – Energy Management; LED adoption

GRI

Disclosure	Disclosure Name	Location / Response
GRI 303-1	Interactions with water as shared resource	Environmental – Water Management
GRI 303-3	Water withdrawal	Environmental – Water Management
GRI 303-4	Water discharge	Environmental – Water Management
GRI 304-3	Habitats protected or restored	Environmental – Biodiversity & Land
GRI 305-1	Direct (Scope 1) GHG emissions	To be quantified in next reporting cycle
GRI 305-2	Energy indirect (Scope 2) GHG emissions	To be quantified in next reporting cycle
GRI 305-7	Nitrogen oxides, SO _x and other significant air emissions	Environmental – Air Quality
GRI 306-1	Waste generation and significant waste-related impacts	Environmental – Waste Management
GRI 306-2	Management of significant waste-related impacts	Environmental – Waste Management
GRI 306-3	Waste generated	Environmental – Waste Management
GRI 306-4	Waste diverted from disposal	Environmental – Waste Management
GRI 306-5	Waste directed to disposal	Environmental – Waste Management
GRI 307-1	Non-compliance with environmental laws and regulations	Environmental – Regulatory Compliance
GRI 308-1	New suppliers screened using environmental criteria	Supply Chain – Supplier ESG Evaluation
GRI 401-1	New employee hires and employee turnover	Social – Employment Practices
GRI 401-2	Benefits provided to full-time employees	Social – Employment Practices; Employee Welfare
GRI 403-1	OHS management system	Social – Occupational Health & Safety
GRI 403-2	Hazard identification and risk assessment	Social – Occupational Health & Safety
GRI 403-3	Occupational health services	Social – Occupational Health & Safety

GRI

Disclosure	Disclosure Name	Location / Response
-------------------	------------------------	----------------------------

GRI 403-4	Worker participation on OHS	Environmental – Water Management
GRI 403-5	Worker training on OHS	Environmental – Water Management
GRI 403-6	Promotion of worker health	Environmental – Water Management
GRI 403-9	Work-related injuries	Environmental – Biodiversity & Land
GRI 403-10	Work-related ill health	To be quantified in next reporting cycle
GRI 404-1	Average hours of training per year per employee	To be quantified in next reporting cycle
GRI 404-2	Programmes for upgrading employee skills	Environmental – Air Quality
GRI 404-3	Percentage of employees receiving reviews	Environmental – Waste Management
GRI 405-1	Diversity of governance bodies and employees	Environmental – Waste Management
GRI 405-2	Ratio of basic salary by gender	Environmental – Waste Management
GRI 406-1	Incidents of discrimination	Environmental – Waste Management
GRI 408-1	Operations at significant risk of child labour	Environmental – Waste Management
GRI 409-1	Operations at significant risk of forced labour	Environmental – Regulatory Compliance
GRI 413-1	Operations with community engagement	Supply Chain – Supplier ESG Evaluation
GRI 414-1	New suppliers screened using social criteria	Social – Employment Practices
GRI 418-1	Substantiated complaints on customer privacy	Social – Employment Practices; Employee Welfare

FORWARD-LOOKING COMMITMENTS & CAUTIONARY STATEMENT

Priorities for the Next Reporting Cycle

GTCL is committed to strengthening its sustainability performance and reporting practices. Key priorities for FY 2025–26 include:

Priority Area	Planned Action
GHG Emissions Reporting	Develop Scope 1 and Scope 2 GHG inventory and report in next cycle (GRI 305-1, 305-2)
Training Data	Formalise average training hours per employee tracking (GRI 404-1)
Water Data	Quantify total water withdrawal and discharge (GRI 303-3, 303-4)
Supplier ESG Screening	Implement structured ESG screening for new suppliers (GRI 308-1, 414-1)
Renewable Energy	Explore renewable energy opportunities and establish targets
Sustainability Targets	Establish measurable time-bound ESG targets across all material topics
Third-Party Assurance	Evaluate feasibility of external assurance for future reports
Stakeholder Materiality	Conduct formal stakeholder consultation for materiality assessment

Cautionary Statement

This Sustainability Report presents the environmental, social, and governance (ESG) performance of Gujarat Tech Cast Pvt. Ltd. (GTCL) for the reporting period 1 April 2024 to 31 March 2025. The information has been compiled using internal operational data, environmental monitoring records, and organisational policies.

This report may contain statements regarding future expectations, sustainability initiatives, and planned operational improvements. These statements are based on current assumptions, estimates, and available information at the time of publication. Actual results may differ from the expectations expressed in this report due to factors such as changes in regulatory requirements, economic conditions, operational developments, or other external circumstances.

Accordingly, the information presented in this report should be considered as indicative of the company's current sustainability approach rather than a guarantee of future performance.

Commitment to Transparency

Through this Sustainability Report, Gujarat Tech Cast Pvt. Ltd. (GTCL) aims to provide transparent insights into its sustainability journey and reinforce its commitment to responsible manufacturing, environmental stewardship, and ethical governance.

Gujarat Tech Cast Pvt. Ltd. remains committed to strengthening its sustainability practices and improving transparency in environmental, social, and governance performance. As the company continues to grow, it will focus on enhancing resource efficiency, maintaining responsible workplace practices, and strengthening governance systems. Through continuous improvement and collaboration with stakeholders, GTCL aims to contribute to sustainable industrial development while delivering long-term value for customers, employees, and the communities in which it operates.

INDEPENDENT THIRD-PARTY ASSESSMENT STATEMENT

This GRI Content Index maps each GRI disclosure to the relevant sections of this Sustainability Report. This report has been prepared in accordance with the GRI Standards for the period 1 April 2024 to 31 March 2025.

Assessment Type	Third-Party ESG Advisory Assessment & Guidance Assurance
Subject Organisation	Gujarat Tech Cast Pvt. Ltd. (GTCL), GPCL Group
Facility Assessed	Survey No. 55/3, Near Falcon Pipes, NH-27 Pipaliya, Sadak, Taluka :, Gondal, Pipaliya, Gujarat 360311
Reporting Period	1 April 2024 to 31 March 2025 (FY 2024–25)
Report Title	Sustainability Report FY 2024–25
Assessing Organisation	GreenMinds India — Sustainability Consulting & ESG Advisory
Assessment Date	March 2025
Statement Reference	GMI/SR/TPA/002

1 INTRODUCTION & MANDATE

GreenMinds India, an independent sustainability consulting and ESG advisory firm, was engaged by Gujarat Tech Cast Pvt. Ltd. (GTCL) to provide third-party guidance, data review, calculation support, and assessment in connection with the preparation of GTCL's Sustainability Report for the financial year 2024–25. This document constitutes the formal Third-Party Assessment Statement issued by GreenMinds India upon completion of that engagement.

This assessment statement is addressed to the management and stakeholders of Gujarat Tech Cast Pvt. Ltd. and is intended to be published as part of, or alongside, the GTCL Sustainability Report FY 2024–25. It has been prepared independently by GreenMinds India and reflects the professional judgement of the assessing team based on the work undertaken during the engagement.

GreenMinds India confirms that its engagement with GTCL in connection with this report was conducted with professional independence and objectivity, and that no conflict of interest existed that would impair the integrity of this assessment.

2 SCOPE OF ASSESSMENT

The scope of GreenMinds India's assessment encompassed the following activities undertaken in support of and in review of GTCL's Sustainability Report FY 2024–25:

- Review and evaluation of GTCL's ESG data collection processes, internal records, and supporting documentation across environmental, social, and governance topic areas
- Guidance on the identification and prioritisation of material sustainability topics through stakeholder mapping and materiality considerations
- Technical support in the calculation and verification of greenhouse gas (GHG) emissions, including Scope 1 (LPG and diesel combustion) and Scope 2 (grid electricity) emissions in accordance with the GHG Protocol Corporate Accounting and Reporting Standard
- Review of energy consumption data, water management practices, waste management records, occupational health and safety performance, and workforce data
- Assessment of the report's alignment with applicable voluntary sustainability reporting standards and frameworks (detailed in Section 4)
- Review of the overall structure, completeness, balance, and accuracy of disclosures presented in the Sustainability Report
- Verification that stated performance indicators are consistent with the supporting operational data reviewed during the engagement

The assessment covered GTCL's manufacturing facility at Veraval (Shapar), Rajkot, as the sole reporting entity. Activities of affiliates, parent group entities, or third-party contractors were not within the scope of this assessment unless directly referenced in the report.

3 ASSESSMENT METHODOLOGY

GreenMinds India conducted this assessment using a risk-based, evidence-driven methodology, consistent with professional ESG assurance and advisory practice. The following methods were applied:

Document Review

- Internal ESG data records, utility bills, production logs, environmental monitoring reports, safety incident registers, training records, and governance policy documents were reviewed
- Supporting calculations for GHG emissions, energy consumption, and water management were examined for methodological consistency and accuracy

Data Verification

- Key quantitative disclosures — including electricity consumption (kWh), LPG and diesel usage (kg/litres), GHG emission calculations (tCO₂e), rainwater harvesting capacity (litres), tree plantation counts, and workforce data — were cross-checked against source documentation
- Emission calculations were reviewed for consistency with the GHG Protocol and applicable emission factor databases (IPCC AR5; CEA India national grid factor)

Interviews and Consultations

- Discussions were conducted with responsible personnel at GTCL across operational, environmental, HR, safety, and governance functions to corroborate reported information and assess the robustness of data collection systems

Framework Alignment Review

- The report's disclosures were reviewed against GRI Standards requirements, GHG Protocol methodology, and relevant guidance frameworks (ISO 14064-1, ISO 26000, ISO 20400) to assess conformance and identify gaps

Completeness and Balance Assessment

- The overall report was assessed for completeness of disclosures, balance in the presentation of positive and negative performance, factual accuracy, and clarity of communication to stakeholders

4 APPLICABLE STANDARDS & FRAMEWORKS

GTCL's Sustainability Report FY 2024–25 has been prepared in alignment with the following voluntary best-practice standards and guidance frameworks, which informed GreenMinds India's assessment criteria. GreenMinds India confirms that GTCL has made reasonable and appropriate efforts to align its reporting and practices with these standards, recognising that this is GTCL's inaugural sustainability report and that full implementation of all standards is an evolving process.

Standard / Framework	Application Domain	Assessment Status
GRI Standards (GRI 1, 2, 3; Topic Standards 302–418)	ESG Reporting Framework	Report prepared in accordance with GRI Standards; GRI Content Index included
GHG Protocol — Corporate Accounting & Reporting Standard	GHG Emissions Accounting	Scope 1 and Scope 2 emissions calculated per GHG Protocol methodology
ISO 14064-1:2018 — GHG Quantification & Reporting	GHG Inventory Guidance	Emission quantification principles and organisational boundary approach aligned
ISO 14001:2015 — Environmental Management Systems	Environmental Management	GTCL holds ISO 14001:2015 certification (TÜV NORD); EMS operational
ISO 45001:2018 — OH&S Management Systems	Occupational Safety	GTCL holds ISO 45001:2018 certification (TÜV NORD); OHS system operational
ISO 9001:2015 — Quality Management Systems	Quality Assurance	GTCL holds ISO 9001:2015 certification (TÜV NORD)
ISO 26000:2010 — Guidance on Social Responsibility	CSR & Social Responsibility Guidance	Guidance principles applied across human rights, community, and governance disclosures
ISO 20400:2017 — Sustainable Procurement Guidance	Supply Chain Sustainability	Sustainable procurement policy and supplier evaluation framework informed by ISO 20400 principles

5 KEY ASSESSMENT FINDINGS

Based on the work undertaken during this engagement, GreenMinds India presents the following key findings:

5.1 Data Integrity and Accuracy

The quantitative environmental, social, and governance performance data presented in the Sustainability Report is consistent with the underlying operational records and documentation reviewed by GreenMinds India. Key indicators — including electricity consumption, LPG and diesel usage, GHG emission calculations, rainwater harvesting capacity, workforce headcount, safety incident records, and training coverage — were verified against source documentation and found to be accurately reported. No material discrepancies were identified between reported figures and supporting evidence.

5.2 GHG Emissions Calculation

GTCL's greenhouse gas emission calculations for Scope 1 (total 185.872 tCO₂e) and Scope 2 (total 849.067 tCO₂e), resulting in a combined carbon footprint of 1,034.939 tCO₂e for FY 2024–25, have been reviewed by GreenMinds India. The emission factors applied are consistent with recognised methodologies (IPCC AR5; CEA India grid emission factor). The calculations are methodologically sound and appropriately disclosed. Emission intensity of 4.34 tCO₂e per tonne of production is correctly derived from the data. The year-on-year reduction of 85.13 tCO₂e (7.6%) in absolute emissions is substantiated by reviewed data.

5.3 GRI Framework Alignment

The report demonstrates meaningful alignment with the GRI Standards. The GRI Content Index included in the report maps disclosures to the relevant GRI Standards in a manner that is consistent with the reported content. As an inaugural sustainability report, certain disclosures — notably Scope 3 emissions, average training hours (GRI 404-1), and quantified water withdrawal/discharge data — are acknowledged as areas for future development, which is appropriately communicated within the report.

5.3 GRI Framework Alignment

The report demonstrates meaningful alignment with the GRI Standards. The GRI Content Index included in the report maps disclosures to the relevant GRI Standards in a manner that is consistent with the reported content. As an inaugural sustainability report, certain disclosures — notably Scope 3 emissions, average training hours (GRI 404-1), and quantified water withdrawal/discharge data — are acknowledged as areas for future development, which is appropriately communicated within the report.

5.4 Regulatory Compliance

Evidence reviewed confirms that GTCL maintained full environmental regulatory compliance with the Gujarat Pollution Control Board (GPCB) throughout the reporting period, with zero monetary penalties, sanctions, or environmental violations recorded. Occupational health and safety performance demonstrated zero recordable workplace incidents and zero fatalities.

5.5 Social and Governance Practices

GTCL's social disclosures — including 100% local workforce recruitment, gender diversity data, ISO 45001-certified occupational health and safety management, 100% employee training coverage, zero child or forced labour incidents, and community tree plantation programme — are supported by internal records reviewed during the engagement. Governance disclosures relating to the ESG Committee, anti-corruption policy, and whistleblower mechanism are consistent with the policies and documentation made available to GreenMinds India.

5.6 Supply Chain and Procurement

GTCL's sustainable procurement practices, including the use of recycled steel scrap as the primary raw material and annual supplier audits, are consistent with the principles of ISO 20400 on sustainable procurement. The Supplier Code of Conduct is in place. Supplier ESG evaluation processes are noted to be in development, which is transparently disclosed in the report.

6 RECOMMENDATIONS FOR CONTINUOUS IMPROVEMENT

In a spirit of constructive engagement consistent with ISO 26000 principles of continuous improvement, GreenMinds India offers the following recommendations to strengthen future sustainability reporting and performance:

Develop and disclose a quantified Scope 3 GHG inventory, beginning with the most significant

- upstream and downstream emission categories relevant to GTCL's value chain
- Formalise the tracking and documentation of average employee training hours per person to enable full compliance with GRI 404-1 in future cycles
- Quantify and disclose total water withdrawal volumes and effluent discharge data in accordance with GRI 303-3 and GRI 303-4
- Establish time-bound, measurable sustainability targets across key material topics — including energy intensity, emission reduction, water use, and waste diversion rates
- Formalise structured ESG screening criteria for new suppliers, consistent with GRI 308-1 and GRI 414-1, and ISO 20400 guidance
- Evaluate feasibility of obtaining independent third-party assurance in future reporting cycles to enhance stakeholder confidence and credibility
- Explore and formalise a formal stakeholder consultation process for materiality assessment in accordance with GRI 3-1 methodology
- Pursue renewable energy procurement or on-site generation opportunities to reduce Scope 2 emission intensity over the medium term

7 ASSESSMENT CONCLUSION

Based on the assessment work described in this statement, GreenMinds India concludes that the Sustainability Report FY 2024–25 of Gujarat Tech Cast Pvt. Ltd. (GTCL) presents a fair, balanced, and materially accurate account of the company's environmental, social, and governance performance for the period 1 April 2024 to 31 March 2025.

The report demonstrates credible alignment with the GRI Standards (GRI 1: Foundation 2021; GRI 2: General Disclosures 2021; Topic-Specific Standards), the GHG Protocol Corporate Accounting and Reporting Standard, and the guidance principles of ISO 14064-1, ISO 26000,

and ISO 20400, to the extent applicable and appropriate for an inaugural sustainability report by an organisation of GTCL's scale and operational profile.

GreenMinds India commends GTCL for its commitment to transparency in publishing its first sustainability report and for the seriousness with which the organisation has approached its ESG data management, governance structures, and stakeholder accountability. GreenMinds India looks forward to continued engagement with GTCL as it advances its sustainability journey.

8 LIMITATIONS & DISCLAIMER

This assessment statement has been prepared on the basis of information, documentation, and representations provided by Gujarat Tech Cast Pvt. Ltd. during the engagement. GreenMinds India has conducted this assessment with professional diligence and in good faith; however, the assessment does not constitute a full financial audit, statutory assurance engagement, or legal opinion.

The assessment is limited to the reporting period FY 2024–25 and the organisational boundary described herein. GreenMinds India does not accept liability for any decisions made by third parties in reliance upon this statement beyond its intended purpose of providing stakeholders with an independent assessment perspective on the GTCL Sustainability Report FY 2024–25.

This statement should be read in conjunction with the full Sustainability Report of GTCL, including the cautionary statement contained therein.

Issued by:
GreenMinds India
 Sustainability Consulting & ESG Advisory



Statement Details:

Type	Third-Party ESG Advisory Assessment & Guidance Assurance
Level	Advisory / Limited Assurance
Assured By	GreenMinds India
Period Covered	FY 2024–25
Standards Referenced	GRI, GHG Protocol, ISO 14064-1, ISO 26000, ISO 20400
External Audit	Not applicable (advisory engagement)

Sustainability Report FY 2024–25

GRI Standards Aligned

Prepared with support from GreenMinds India

© 2025 Gujarat Tech Cast Pvt. Ltd. All rights reserved.

Gujarat Tech Cast Pvt. Ltd.

An Entity under GPCL Group
Survey No. 188, Plot No. 3, NH-27
Veraval (Shapar), Rajkot – 360024, Gujarat, India
Email: spatel@gpclgroup.com