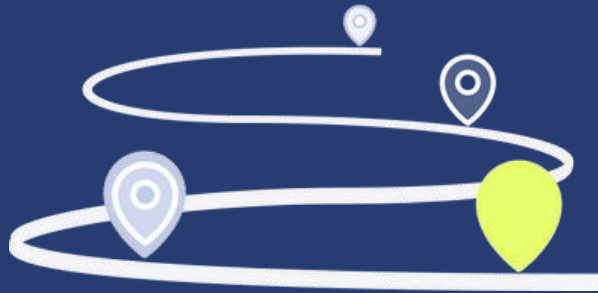




WILLOWDIRECT
Importers of the finest basketware

WILLOW DIRECT LIMITED



OUR SUSTAINABILITY PLAN



Powered by
zellar



Introduction

Willow Direct Limited remains proud of the fact that we import & supply to our trade customers a product that is by its own nature sustainable, in the form of our Willow Basketware. The willow used to produce our basketware is coppiced from fast-growing regenerating crops that are cultivated solely for this purpose, sustaining traditional farming methods without the use of chemical application. The baskets are then handmade by skilled craftsmen, producing high quality & durable products as a result.

As the products that we import & trade are by their own nature sustainable, we strive to ensure as far as is possible that our impact across all areas of business operations is both measured & minimised .

We continue to conspire with our product suppliers to obtain information on additional product fitments & finishes. We wish to provide as accurate information as is possible to our customers on the fitments composition & origins & to pursue alternative improvements where feasible.

We fully recognise that our Importing & Goods Out operations remain our main source of emissions. We continue to collaborate with our sustainability partner, Zellar to aid the progression of measuring & improving our emissions.

This report contains:

1. Our annual emissions data (from our 2023 operations).
2. Completed actions.
3. Planned actions.

Emissions Data

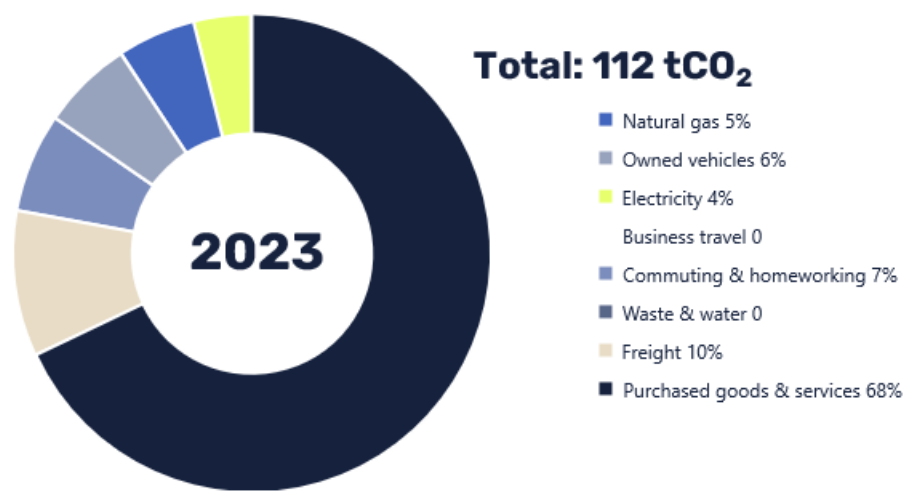


Emissions

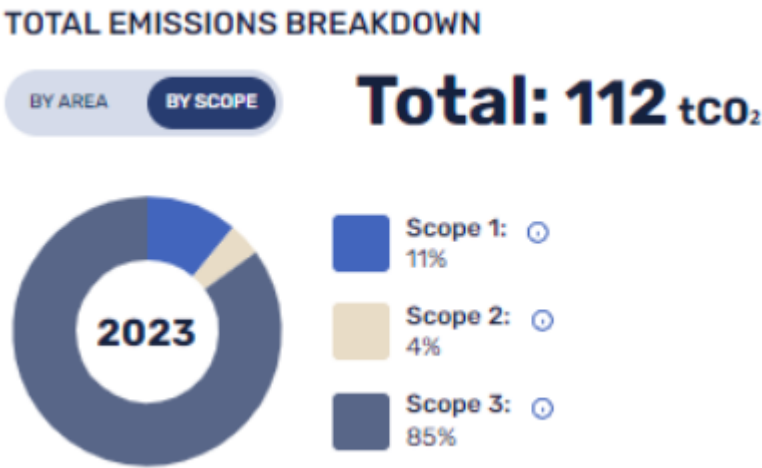
We have calculated our Scope 1, 2 & 3 emissions data for 1 year (2023). We will continue to track and report our annual emissions data going forward.

Baseline period: 2022				
Background: We have measured our emissions in accordance with Greenhouse Gas Protocol using the Zellar platform.				
Scope	Emissions Source	Emissions (tCO ₂ e)		Change from base year
		2023	2022	
Scope 1	Natural gas	5.9	6.5	-9%
	Owned vehicles	6.9	7.8	-12%
Scope 2	Electricity	4.3	5.1	-16%
Scope 3	Business travel	0.0	0.2	-100%
	Commuting & homeworking	7.5	7.7	-3%
	Waste & water	0.1	0.1	0%
	Freight	11.0	4.1	168%
	Purchased goods & services	76.0	70.0	9%
Total		111.70	101.50	10%

2023 Emissions



Scope



Methodology

We have calculated our scope 1&2 emissions, plus the impact of business travel, commuting & home-working.

Emissions are calculated via Zellar's sustainability platform. Zellar's calculation approach aligns with the Greenhouse Gas Protocol. Emission factors are based on the latest UK government CO2e conversion factors or the most applicable available, and updated annually.

The GHG Protocol classifies emissions into 3 "scopes" namely :

- Scope 1 – A Company's direct emissions from owned or controlled sources such as emissions from vehicles, combustion, processes, or leakages.
- Scope 2 – A Company's indirect emissions from the generation and consumption of purchased energy (electricity, heating, cooling).
- Scope 3 – A Company's indirect emissions (not included in scope 2) that occur in the value chain of the reporting company, including both upstream and downstream emissions, as a consequence of the company's operations.

We remain cognisant of the fact that the significant portion of our emissions are within Scope 3 & arise directly via our supply chain operations.

We commit to track & reduce these emissions over time. We have once again collaborated with our suppliers to obtain as accurate data as is possible at this time.

We have measured our Scope 3 emissions from both our Importing & Goods out operations. We have considered goods out emissions that are paid for by Willow Direct Limited.

Any goods out operations paid for by our customers will require to be taken into account in their Scope 3 calculations.

The confines of our Scope 3 calculations are within our Importing & Goods out operations at present as these constitute our main impact.

Emissions – Our Calculations Findings

Our calculations evidence a slight increase from our 2022 Company figures.

However, there are positive results from our 2023 calculations which are summarised below :

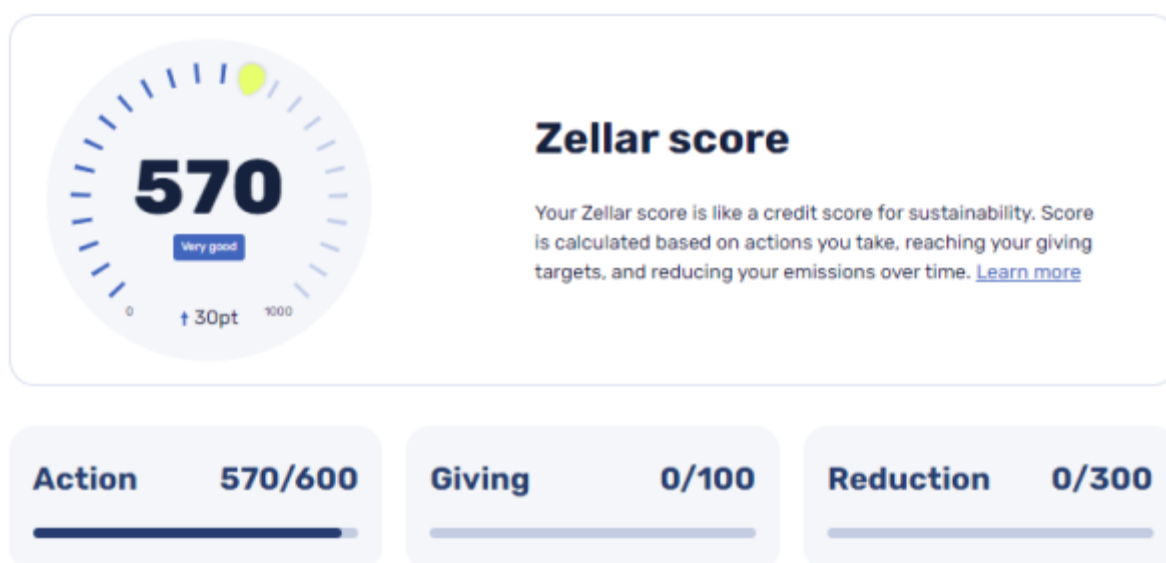
- Our electric usage across the business has decreased.
- Our gas usage across the business has decreased.
- Company vehicle usage across the business has decreased.
- Business travel (not commuting) was reduced to zero for 2023.
- Business commuting emissions across the business decreased.

Where then has the increase in our CO2 tonnage originated from during our 2023 operations?

The findings can be summarised below :

- Our freighted goods (Goods Out operations) accounted for the largest increase. This was mostly due to an increase in goods distribution via one of our courier partners. They were also able to supply an emissions report for the first time, detailing Willow Direct specific figures from using their services. The accuracy of this data gives logical reasoning to the increase.
- Our Purchased goods & services emissions (our Importing operations) increased in 2023. The reason for this increase is 2 fold – namely there was a small increase in the number of shipping containers imported. Additionally, much more accurate data was obtained to calculate the total tonnage of product imported.
- There has been a very slight increase in our Water & waste usage. This relates only to a very small increase in our water usage figures. The increase is too insignificant to be able to put in place any planned reduction measures.

Our current Score from our partner Zellar



Completed Actions



Completed actions undertaken to Reduce our Impact

The following environmental management measures and projects have been completed :

- We have engaged our supply chain, working together to promote & implement sustainability practices. We continually communicate with our supply chain regarding product fitments & finishes. We wish to provide accurate information to our customers where possible on the composition & origins & to pursue alternatives where feasible to reduce impact.
- We continue to assess our importing practices. We have always used shipping as our mode of transport for importing purposes. We continually work in conjunction with our suppliers & ensure that our containers are stocked fully prior to beginning their journey. This helps lessen our impact in this part of our operations.
- We have successfully reduced waste generation & minimised the proportion sent to landfill through efficient waste management. Our waste uplift partner strives to ensure that only 2% of any waste that they collect will go to landfill. We are working together with them to get accurate weight data for the uplift of our waste in order to improve the accuracy of our calculations & to help reduce impact. We continue to implement small measures. For example, we continue to use ceramic cups within our premises, instead of single use alternatives. We also use a little paper as possible in our Office operations.
- We have installed energy-efficient LED lighting in our premises, reducing energy consumption & lowering carbon emissions. The initial outlay for this project has been outweighed in the saving of replacement bulbs & the difficulty the bulbs created in reaching them safely within our warehousing areas.
- We have installed lighting sensors in most of our warehousing facilities to assist in reducing usage. They appear to be working well taking into consideration any energy savings & the safety of our valued team.
- We have installed solar power systems (photovoltaic), generating clean, renewable energy for our operations. We moved our solar panels from our previous Head Office at Cromford to our current Head Office in Wirksworth in Derbyshire. This was done to maximise the potential benefits of the installation of the panels.
- We have installed smart meters, enabling us to monitor & manage our energy usage more effectively.
- We have installed an energy-efficient boiler, optimising heating systems & reducing energy consumption. The installation ensures we can benefit from an energy efficient boiler onsite. It is serviced annually to keep the boiler running optimally.
- We continue to review our water usage. Thankfully our water usage within the business is relatively small, however there has been a slight increase year on year. We will examine the possible reasons for this, and look for any possibility of reduction.
- We have undertaken an energy audit & worked with the DE-Carbonise project, led by the University of Derby, in collaboration with Derby City & Derbyshire County Councils to assist us in our path to reduce impact.
- We have successfully minimised our own packaging, significantly reducing waste & minimising our environmental impact.

- We have minimised business travel, adopting alternative remote communication options to reduce our carbon footprint. Again in 2023 we minimised business travel to reduce our impact, instead choosing to use other forms of technology to liaise with suppliers and to engage with customers.
- We have sourced products from local suppliers where possible, reducing transportation emissions & supporting our local economy.
- We have developed & documented our business sustainability policy, clearly stating our commitment to environmental and social responsibility. It is our intention to update the policy as and when required.
- We continue to engage & discuss with our employees' sustainability topics & initiatives, fostering a culture of environmental consciousness.
- We conduct sustainability progress meetings, which provide an opportunity to track & discuss our sustainability progress.
- We have offered advice to employees who work from home, supporting them in adopting environmentally friendly practices.
- We have invested in a green pension scheme, supporting environmentally sustainable initiatives through our pension fund.
- We have chosen a sustainable insurance provider, ensuring our insurance coverage aligns with our sustainability goals.
- Willow Direct has signed up to the SME Climate Commitment. In doing so we have pledged to halve our emissions by 2030, achieve net zero by 2050, and to disclose progress on an annual basis.

Planned Actions



In the future we hope to implement further measures such as:

- Looking into getting involved with greener shipping options as they become more readily available across the world.
- Looking to introduce electric vehicles to our fleet for eco-friendly transportation.
- Switching to 100% green energy & utility providers as our contract renewal dates allow.
- Considering local biodiversity projects to become involved in – However, we are very conscious that we do not want to simply offset our impact. We will also only consider reputable & worthwhile projects.
- Looking at potential biodiversity projects in the areas of our major suppliers. This could assist in emission reductions where we cannot reduce our impact otherwise.

**Scan to search & view our
Zellar sustainability profile**

