

Sustainability Report 2024

Our Commitment to a
Sustainable Future



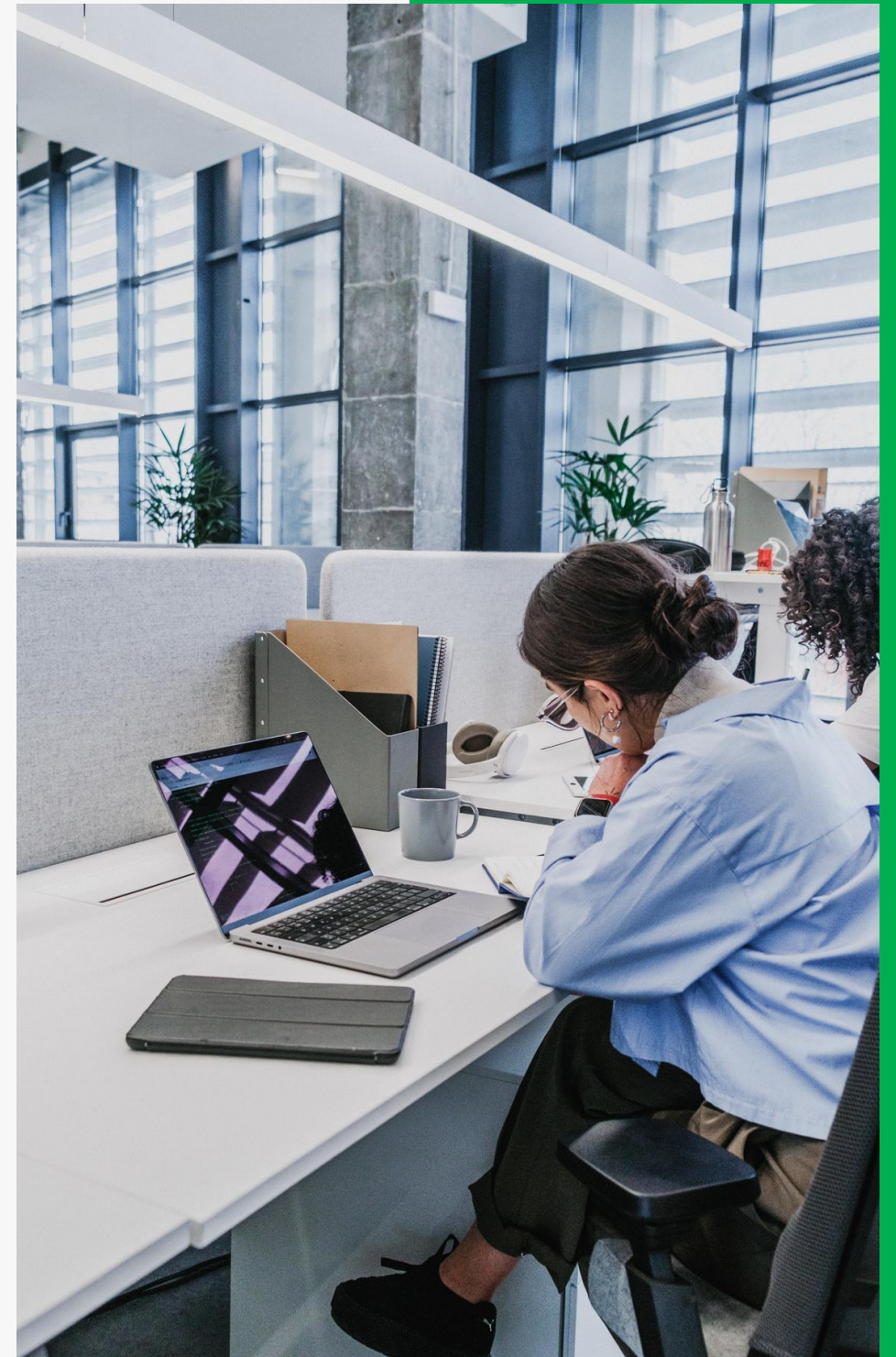
Chiltern TMC

Guiding Your Path to Sustainable Success



Content

- About Us
- CEO's Vision: Green Leadership in Action
- Our Service
- Our Strategy
- Sowing Seeds of Change: 2024 Highlights
- Chiltern TMC Supports Sustainability Development Goals
- Our Team: Mighty Mindpower for Sustainability
- Greening Our Footprint: Minimizing Our Impact
- Sustainable Paper Practices
- Reduction Strategies
- Inspiring Change



About Us

At **Chiltern TMC**, we are committed to driving positive change in the world of sustainability. Based in Dubai, United Arab Emirates, and extending our services globally, we are your dedicated partner in navigating the complex landscape of environmental, social, and governance (ESG) matters.

Our mission is clear: to guide businesses and industries towards achieving net-zero emissions, fostering sustainability, and creating a lasting impact on our planet and communities.

Our Expertise

With years of experience and a deep-rooted passion for sustainability, we offer a comprehensive range of services that enable organizations to embrace responsible practices and achieve their sustainability goals. Our expertise spans across key pillars of sustainability

ESG Reporting

We recognize the importance of transparent and credible ESG reporting. Our team assists clients in accurately measuring, disclosing, and communicating their environmental and social performance. Through insightful reporting, we empower businesses to showcase their commitment to responsible practices.

Our Impact

At Chiltern TMC, we understand that sustainability isn't just a buzzword – it's a fundamental shift towards a more resilient and equitable world. We collaborate closely with businesses and industries to navigate the challenges posed by climate change and resource depletion. Through our services, we empower organizations to

Achieve Net Zero

We believe that achieving net-zero emissions is a cornerstone of sustainable growth. We guide clients in developing actionable strategies to reduce emissions, offset unavoidable impacts, and ultimately achieve a net-zero footprint.

Build Resilience: Climate change poses significant risks to businesses. We work with clients to identify vulnerabilities and implement measures that build resilience against changing environmental and societal dynamics.

Drive Innovation: Sustainability demands innovation. We inspire our clients to embrace innovation as a driver of growth, exploring eco-friendly technologies, circular economy models, and sustainable supply chain practice

“We Bleed Green, It's In Our Veins”



Vision

To be the world's best Quality and Standardization Consultants.

To make this world as a sustainable environment to all living beings by implementing management effective systems



Mission

To provide the highest quality of customer service delivered with the dedication, friendliness, individual pride, and company spirit.



Our Approach

Chiltern TMC Consultant specializes in ISO, FSC, PEFC, BRCGS, HACCP, FSSC, API, SUSTAINABILITY Consulting for Small, Medium size, and Large size Business Certification, backed by an efficient IT system and a group of professionals and experts.



CEO's Vision: Green Leadership in Action

I am delighted to present Chiltern TMC's 1st annual sustainability report for 2023 – a year where climate change and social equity have taken center stage amidst global political tensions and economic uncertainty.

As a sustainability consultancy born and bred in Dubai, we have sustainability hardwired into our DNA. We eat, sleep, and breathe this vision every single day. As a purpose-driven enterprise, our very essence revolves around steering organizations through their paths toward net zero and ESG excellence. We not only advise but actively lead by example, illuminating the way forward with our commitment

Despite the volatile operating context, I am proud of what we have achieved this year from an impact standpoint. We expanded our emissions quantification capabilities to support more companies in the Middle East to accelerate decarbonization. Our ESG reporting team put together 3 reports for regional clients across manufacturing, Service and Trading – enhancing transparency on sustainability performance. Moreover, through our ISO and ESG consultations, we have equipped companies to embed sustainability through holistic systems and processes.

Internally, our footprint may be small, but our eco-conscious culture runs deep. This year, we implemented measures to track and offset carbon emissions from travel and office activities. As a next step, we aim to establish science-based targets to drive down our footprint. Employees also came together to organize quarterly beach clean-ups bringing our sustainability mission full circle.

As we look ahead, the road to sustainable development remains long and winding. But with our expertise, passion, and purpose-driven ethos, I believe Chiltern TMC can play a crucial role in moving the needle through our services. The need for climate resilience and social responsibility has never been greater. By empowering more regional businesses to realize net zero and ESG excellence, I hope we can collectively build a sustainable tomorrow.

The journey continues and I count on the support of our clients, partners, and dearest employees to shape a brighter future.

Premnath Babu

CEO

15/01/2024



Our Service

Consultancy

ISO 9001	ISO 14001	ISO 14064	ISO 14067	ISO 17025
ISO 29001	ISO 27001	ISO 45001	ISO 50001	FSC
PEFC	GRS			

Training

ISO	FSC	PEFC	AOSH	BRCGS
API				

ESG Reporting

GRI	SASB	Carbon Footprint	LCA/EPD
-----	------	------------------	---------

Our Strategy

Our commitment to sustainability runs deep. Guided by ESG principles, our multi-pronged strategy focuses on enabling clients' net zero transitions, advancing environmental best practices, fostering an equitable and ethical workplace, driving innovation for circular solutions, and collaborating to scale impact. We aim to lead by example through our words, actions and sustainable business culture.

01

People

We invest wholeheartedly in our biggest asset – our people. By nurturing a diverse, equitable and engaging workplace, we empower employees to drive impact through sustainability-focused innovation. Ongoing training, partnerships, and capacity building enhance employee skills and leadership to spearhead ethics and enrich our culture centered on empathy and accountability.

02

Planet

Our environmental stewardship starts with quantifying and mitigating our organizational footprint – from emissions to resource use and waste. Guided by climate science, we advance net-zero pathways, champion circular economic principles and enable clients' sustainability quests through our consulting services. Alongside, we participate actively in collective action initiatives to spur urgent climate progress and localized sustainable development.

03

Profit

Our sustainable business ethos balances profit with higher purpose. We believe that driving change through our services and enabling client impact is tied directly to our own resilient growth. Embedding ESG lens and advising clients on their transitional journeys cultivate trust-based relationships that pave the path for shared value. This symbiotic link between impact unlocked and commercial growth allows us to scale our mission for a net-zero, equitable future.

Sowing Seeds of Change: 2024 Highlights

“At Chiltern TMC, we are not just consultants; we are pioneers on a mission to cultivate a brighter, more sustainable future. In the year 2024, our small but mighty team embarked on a journey that left a significant footprint of positive change”

Leading Sustainability Pioneers:

Picture a group of passionate minds navigating uncharted waters—Chiltern TMC stands tall as a beacon of sustainability innovation. As pioneers, we are committed to steering the course toward a world where sustainability is not just a choice, but a way of life.

Changing the World, One Company at a Time:

In 2023, our impact radiated across 281 companies, leaving a trail of transformation. From ISO to FSC, PEFC, GRS, and beyond, Chiltern TMC's expertise in sustainability reporting and awareness initiatives became the catalyst for change.

Empowering Through Education:

Numbers tell a story of empowerment. With 3500 training hours invested and 1253 individuals empowered, we've not just delivered certificates; we've sown the seeds of knowledge, nurturing a community of conscious leaders.

ESG in Focus:

Three isn't just a number; it's a trilogy of commitment. Three ESG reports and three GHG emission reports mark our dedication to providing comprehensive insights that go beyond compliance, shaping a landscape where environmental, social, and governance factors converge.

EPD – A Testament to Our Singular Focus:

In the realm of Environmental Product Declarations (EPD), Chiltern TMC stands proudly at the forefront. Our singular EPD is more than a report; it's a testament to our unwavering dedication to transparency and sustainable practices.

As we pen down this chapter in our sustainability journey, we invite you to join us in celebrating not just the milestones but the collective effort it takes to pave a path towards a world where sustainability thrives. Together, let's turn the page to a future where each footprint leaves a positive mark, and each decision shapes a sustainable legacy.



136

Companies Transformed



596

Certificates of Excellence



3200

Training Hours



1700

Empowered Minds



24

5 ESG Reports, 9 GHG Emission Reports, 10 EPD

In our journey as sustainability pioneers, Chiltern TMC takes pride in aligning our vision and actions with the United Nations' Sustainable Development Goals (SDGs). As a dedicated sustainability consultancy, we recognize the interconnectedness of global challenges and understand the pivotal role we play in contributing to a better and more sustainable world.

Life on Land (SDG 15):
Conserving Biodiversity: Chiltern TMC's consultancy work includes promoting sustainable land use and biodiversity conservation, aligning with the principles of SDG 15.

Life Below Water (SDG 14):
Promoting Marine Sustainability: For projects involving marine ecosystems, we actively support SDG 14's objectives, safeguarding life below water through sustainable business practices.

Climate Action (SDG 13):
Empowering Change Makers: At Chiltern TMC, climate action isn't just a commitment; it's our calling. We specialize in guiding organizations towards carbon neutrality and bolstering climate resilience. Our mission aligns seamlessly with the objectives of SDG 13, as we empower businesses to take the lead in combating climate challenges and fostering a sustainable future.

Responsible Consumption and Production (SDG 12):
Nurturing Responsible Practices: Our consultancy promotes responsible consumption and production, aiding businesses in reducing waste and enhancing resource efficiency to meet the objectives of SDG 12.

Industry, Innovation, and Infrastructure (SDG 9):
Driving Sustainable Innovation: Chiltern TMC fosters sustainable business practices, supporting innovation and infrastructure development in line with SDG 9.

Partnerships for the Goals (SDG 17):
Collaborative Impact: SDG 17 underscores the importance of partnerships, and at Chiltern TMC, collaboration is at the core of our approach, working with clients, stakeholders, and the community to achieve shared sustainability goals.

Gender Equality (SDG 5):
Inclusive Culture: Chiltern TMC champions gender equality within our team and solutions. Our commitment ensures an inclusive workplace and gender-responsive strategies in our consultancy. Embracing SDG 5, we work towards a world where everyone thrives, fostering equality and sustainable development.

Affordable and Clean Energy (SDG 7):
Empowering Sustainable Practices: We guide organizations in adopting clean and affordable energy solutions, contributing to SDG 7's vision of universal access to sustainable energy.



Our Team: Mighty Mindpower for Sustainability

Our small team celebrates our diversity of backgrounds while being united in our shared commitment to advancing environmental and social change. We lead by example, maintaining an diverse, inclusive, ethical, and eco-friendly workspace. As sustainability advisors, we then guide companies to responsible and sustainable operations through customized guidance rooted in our values. Though few in number, our group has an outsized impact enabling organizations to profitably serve both **people** and **planet**.



Premanth Babu R R

CEO/ SPSC Ambassador/
Sustainability & ISO Lead
Consultant/ FSC Trainer



Rithesh Suresh Kumar

Sustainability Specialist



Gayathri Madhu

ISO Consultant



Vaishnav B

Technical Representative

Marketing Head

Greening Our Footprint: Minimizing Our Impact

Consumption Data

Imagine a future where our impact is minimized, but our passion for the planet knows no bounds. That's the vision driving Chiltern TMC's unwavering commitment to sustainability. We meticulously track our environmental footprint, from electricity and fuel to water and waste, using data to guide our journey towards a greener tomorrow. Transparent reporting and conscientious monitoring pave the way, empowering us to set ambitious goals and refine our eco-friendly practices. Join us on this mission, as we strive to leave a lighter footprint and write a story of hope for our planet.



4453 kWh

Electricity



44826 km

Distance travelled



204.6 kg

Waste

Total
16.03
tCO₂eq

Scope 1
8.67
tCO₂eq

Scope 3
5.56
tCO₂eq

Scope 2
1.8
tCO₂eq

“take a close look at the measurable impact of our operations, focusing on key areas such as energy and fuel consumption, and greenhouse gas emissions.”

Measuring Progress:

To understand our electricity, use thoroughly, we've equipped each wall socket with energy monitors. These devices are not just tools; they're our way of breaking down usage patterns, setting goals, and steering towards a more sustainable future. The metrics derived from these Key Performance Indicators (KPIs) propel us to consistently improve and set ambitious targets for the road ahead.

Zero Waste Pledge:

A cornerstone of our sustainability ethos is a firm zero-waste policy within our office walls. We're proud to declare that we generate no waste, aligning our practices with the circular economy principles. Every decision is a step towards reducing our environmental impact, reflecting our unwavering commitment to a cleaner, greener planet.

Footprint Reduction Efforts:

As part of our ongoing commitment to sustainability, we're constantly measuring and finding ways to reduce our environmental footprint. This dedication extends beyond our workspace, echoing through our operational choices and daily practices.

Virtual Meetings for a Greener Tomorrow:

In a bid to minimize our carbon footprint, we've transitioned many of our business meetings and training sessions online. This not only saves time and resources but also significantly contributes to reducing our overall environmental impact.



Sustainable Paper Practices:

In our pursuit of sustainable operations at Chiltern TMC, our commitment to responsible paper usage stands as a testament to our environmental stewardship. We conscientiously minimize our paper consumption by prioritizing digital documentation and adopting efficient printing practices. Embracing a "less is more" approach, we print double-sided whenever possible, significantly reducing our overall paper usage.

Our dedication to sustainability extends to the very source of our paper. We exclusively procure printing paper from suppliers committed to Responsible Sourcing and Sustainable Regeneration practices. This ensures that our paper comes from responsibly managed forests, supporting biodiversity and forest regeneration.

Furthermore, we proudly declare a zero-waste policy for paper within our organization. All waste papers, along with used ink cartridges, are diligently recycled, contributing to the circular economy and mitigating the environmental impact associated with paper disposal. Through these concerted efforts, we not only reduce our ecological footprint but also promote a paper usage model that aligns with our broader commitment to a sustainable future.



Reduction Strategies

Carbon Footprint Reduction

- ✓ Optimize office energy use with **LED lighting, smart thermostats, and renewable energy sources**.
- ✓ Promote **remote work and virtual meetings** to reduce travel emissions.
- ✓ Encourage **eco-friendly commuting** (public transport, EVs, carpooling).

Resource Efficiency

- ✓ Implement **paperless operations** and digital documentation.
- ✓ Reduce water consumption through **low-flow fixtures** and conservation policies.
- ✓ Minimize office waste via **recycling and sustainable procurement**.


Waste Management

- ✓ Implement a **waste segregation system** to ensure proper disposal and recycling.
- ✓ Reduce single-use plastics by **using reusable office supplies**.
- ✓ Partner with **waste management services** to ensure responsible disposal of electronic waste (e-waste).
- ✓ Encourage **composting programs** for organic waste

Client Engagement & Impact

- ✓ Promote **GHG and waste reduction** strategies in client projects.
- ✓ Develop custom **sustainability roadmaps** for businesses to improve ESG performance.
- ✓ Support **net-zero goals** through policy guidance and compliance frameworks.

Inspiring Change:

The background of the slide features a warm, golden sunset over a calm ocean. In the foreground, the silhouettes of an adult and a young child stand on a beach, looking out at the water. The adult is pointing their right arm towards the horizon, and the child stands beside them, also looking in the same direction. The sun is a bright, glowing orb just above the horizon line, creating a strong backlight effect.

“In the vast ocean of sustainability, Chiltern TMC, though a small team, embraces the profound impact that collective efforts can have on our planet. Our numbers may be modest, but our commitment is mighty. Like individual water droplets coming together to form a vast sea, each action we take contributes to a larger, more sustainable world. We recognize that transformative change begins with small, intentional steps, and we invite you to follow our footsteps. Together, drop by drop, action by action, let's forge a path towards a future where businesses thrive harmoniously with the environment. Join us in the journey to convert your business into a force for positive change, for the people, and for the planet. The ripple effect of our collective endeavors can create waves of transformation, and together, we can make a meaningful impact on the sustainability landscape.”



Chiltern TMC

Guiding Your Path to Sustainable Success

“Our Footsteps, Your Inspiration for a Better World.”



Chiltern TMC Consultant

226, C-11, Mezzanine Floor

Unique World Education Center

Al Karama, Dubai

Contact – +971 588756187 / +971-(0)4 2698356 / info@chilterntmc.com